

Cynomolgus DLK1 Protein

Cat. No. DLK-CM101



Description

Source	Recombinant Cynomolgus DLK1 Protein is expressed from HEK293 with His tag at the C-Terminus. It contains Ala24-Cys306.
Accession	XP_005562275.1
Molecular Weight	The protein has a predicted MW of 31.26 kDa. Due to glycosylation, the protein migrates to 42-52 kDa based on Bis-Tris PAGE result.
Endotoxin	Less than 1EU per µg by the LAL method.
Purity	> 95% as determined by Bis-Tris PAGE > 95% as determined by HPLC

Formulation and Storage

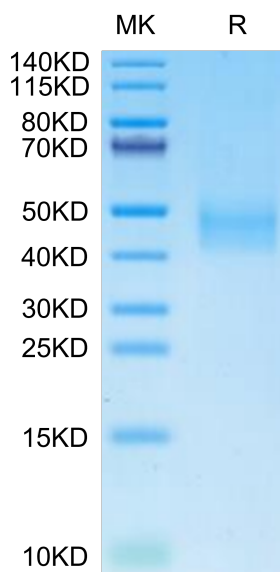
Formulation	Supplied as 0.22µm filtered solution in PBS (pH 7.4).
Storage	Valid for 12 months from date of receipt when stored at -80°C. Recommend to aliquot the protein into smaller quantities for optimal storage. Please minimize freeze-thaw cycles.

Background

paternally inherited genetic defects of DLK1 were identified in four families with nonsyndromic CPP and a metabolic phenotype. DLK1 encodes a transmembrane protein that is important for adipose tissue homeostasis and neurogenesis and is located in the imprinted chromosome 14q32 region associated with Temple syndrome.

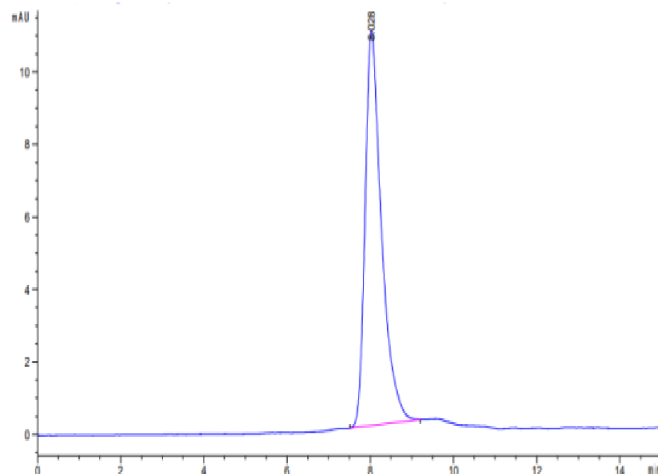
Assay Data

Bis-Tris PAGE



Cynomolgus DLK1 on Bis-Tris PAGE under reduced condition. The purity is greater than 95%.

SEC-HPLC



The purity of Cynomolgus DLK1 is greater than 95% as determined by SEC-HPLC.