

# Human DLK1 Protein

Cat. No. DLK-HM201

## Description

<b>Source</b>	Recombinant Human DLK1 Protein is expressed from HEK293 with hFc tag at the C-Terminus. It contains Ala24-Gln303.
<b>Accession</b>	P80370-1
<b>Molecular Weight</b>	The protein has a predicted MW of 56.58 kDa. Due to glycosylation, the protein migrates to 70-80 kDa based on Bis-Tris PAGE result.
<b>Endotoxin</b>	Less than 1EU per µg by the LAL method.
<b>Purity</b>	> 95% as determined by Bis-Tris PAGE > 95% as determined by HPLC

## Formulation and Storage

<b>Formulation</b>	Lyophilized from 0.22µm filtered solution in PBS (pH 7.4). Normally 8% trehalose is added as protectant before lyophilization.
<b>Reconstitution</b>	Centrifuge the tube before opening. Reconstituting to a concentration more than 100 µg/ml is recommended. Dissolve the lyophilized protein in distilled water.
<b>Storage</b>	-20 to -80°C for 12 months as supplied from date of receipt. -80°C for 3 months after reconstitution. Recommend to aliquot the protein into smaller quantities for optimal storage. Please minimize freeze-thaw cycles.

## Background

paternally inherited genetic defects of DLK1 were identified in four families with nonsyndromic CPP and a metabolic phenotype. DLK1 encodes a transmembrane protein that is important for adipose tissue homeostasis and neurogenesis and is located in the imprinted chromosome 14q32 region associated with Temple syndrome.

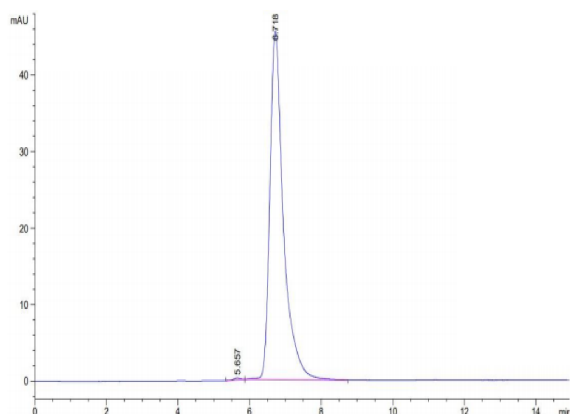
## Assay Data

### Bis-Tris PAGE



Human DLK1 on Bis-Tris PAGE under reduced condition. The purity is greater than 95%.

### SEC-HPLC



The purity of Human DLK1 is greater than 95% as determined by SEC-HPLC.