

Human DLL3 Protein

Cat. No. DLL-HM103

Description

Source	Recombinant Human DLL3 is expressed from HEK293 with His tag at the N-Terminus. It contains Ala27-Arg490.
Accession	Q9NYJ7-1
Molecular Weight	The protein has a predicted MW of 50.4 kDa. Due to glycosylation, the protein migrates to 52-60 kDa based on Tris-Bis PAGE result.
Endotoxin	Less than 1EU per μg by the LAL method.
Purity	> 95% as determined by Tris-Bis PAGE

Formulation and Storage

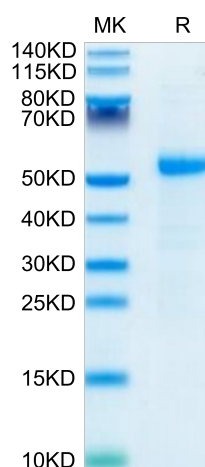
Formulation	Lyophilized from 0.22 μm filtered solution in PBS, 200mM Arginine (pH 7.4). Normally 8% trehalose is added as protectant before lyophilization.
Reconstitution	Centrifuge the tube before opening. Reconstituting to a concentration more than 100 $\mu\text{g}/\text{ml}$ is recommended. Dissolve the lyophilized protein in distilled water.
Storage	-20 to -80°C for 12 months as supplied from date of receipt. -80°C for 3-6 months after reconstitution. 2-8°C for 2-7 days after reconstitution. Recommend to aliquot the protein into smaller quantities for optimal storage. Please minimize freeze-thaw cycles.

Background

Delta-like protein 3 (DLL3) is a transmembrane protein that belongs to the Delta/Serrate/Lag-2 (DSL) family of Notch ligands. DLL3 inhibits primary neurogenesis. May be required to divert neurons along a specific differentiation pathway. Plays a role in the formation of somite boundaries during segmentation of the paraxial mesoderm (By similarity).

Assay Data

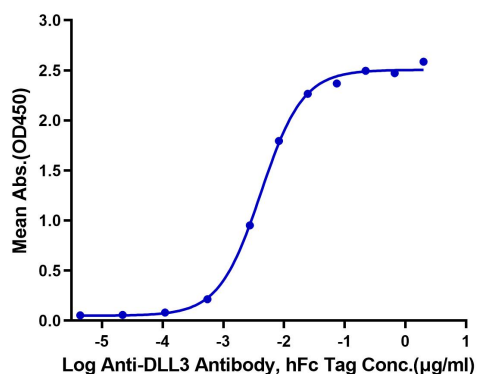
Tris-Bis PAGE



Human DLL3 on Tris-Bis PAGE under reduced condition. The purity is greater than 95%.

ELISA Data

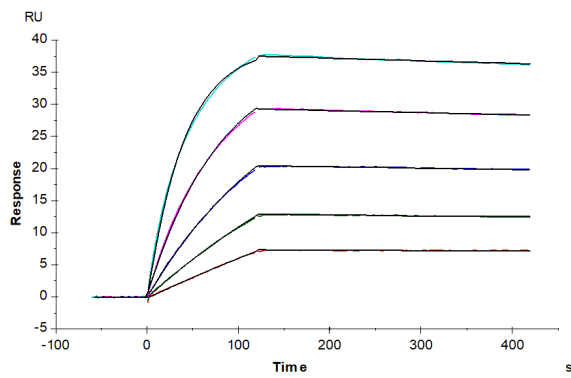
Human DLL3, His Tag ELISA
0.01 μg Human DLL3, His Tag Per Well



Immobilized Human DLL3, His Tag at 0.1 $\mu\text{g}/\text{mL}$ (100 $\mu\text{l}/\text{well}$). Dose response curve for Anti-DLL3 Antibody, hFc Tag with the EC50 of 4.5ng/ml determined by ELISA (QC Test).

Assay Data

SPR Data



Anti-DLL3 Antibody captured on CM5 Chip via Protein A can bind Human DLL3, His Tag with an affinity constant of 0.22 nM as determined in SPR assay (Biacore T200).