

Human DLL4 Protein, Ultra Low Endotoxin



Cat. No. DLL-HM204-UL

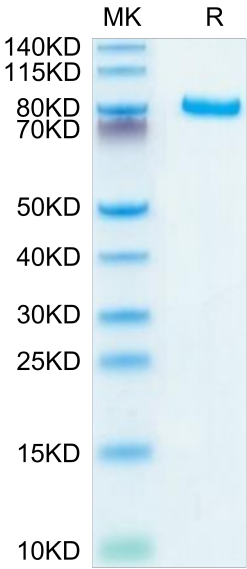
| Description      |  |
|------------------|--|
| Source           | Recombinant Human DLL4 Protein is expressed from HEK293 with hFc tag at the C-Terminus.<br>It contains Ser27-Pro524.               |
| Accession        | Q9NR61   |
| Molecular Weight | The protein has a predicted MW of 81.1 kDa. Due to glycosylation, the protein migrates to 82-90 kDa based on Bis-Tris PAGE result. |
| Endotoxin        | Less than 0.001 EU per µg by the LAL method.   |
| Purity           | > 95% as determined by Bis-Tris PAGE<br>> 95% as determined by HPLC  |

| Formulation and Storage |   |
|-------------------------|---|
| Formulation             | Lyophilized from 0.22µm filtered solution in PBS (pH 7.4). Normally 8% trehalose is added as protectant before lyophilization.  |
| Reconstitution          | Dissolve the lyophilized protein in distilled water. Please refer to the Certificate of Analysis for detailed instructions.   |
| Storage                 | -20 to -80°C for 12 months as supplied from date of receipt. -80°C for 3 months after reconstitution. Recommend to aliquot the protein into smaller quantities for optimal storage. Please minimize freeze-thaw cycles. |

| Background  |  |
|---|--|
| Delta-like protein 4 (DLL4) is a type I membrane protein belonging to the Delta/Serrate/Lag2 (DSL) family of Notch ligands. Activates NOTCH1 and NOTCH4. Involved in angiogenesis; negatively regulates endothelial cell proliferation and migration and angiogenic sprouting. Essential for retinal progenitor proliferation. Required for suppressing rod fates in late retinal progenitors as well as for proper generation of other retinal cell types (By similarity). During spinal cord neurogenesis, inhibits V2a interneuron fate. |  |

Assay Data

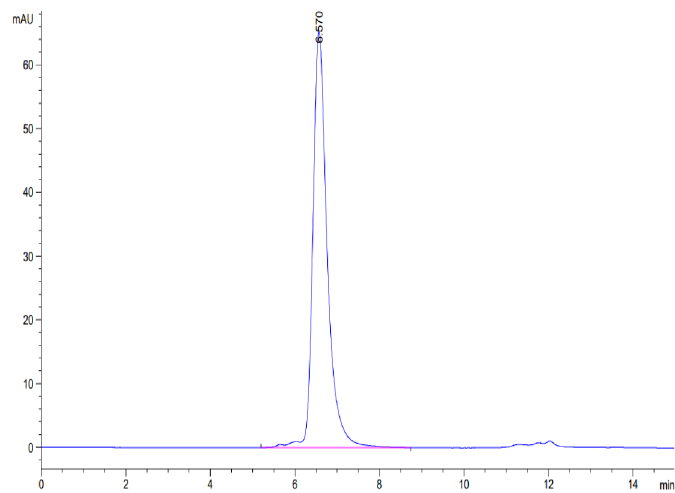
Bis-Tris PAGE



Human DLL4 on Bis-Tris PAGE under reduced conditions. The purity is greater than 95%.

SEC-HPLC

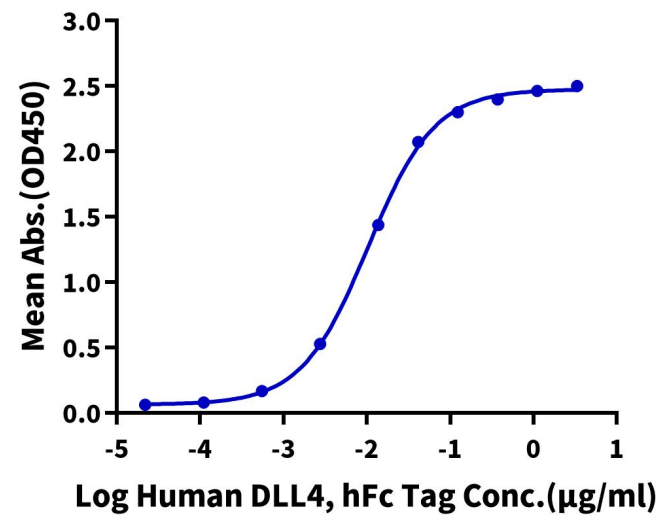
Assay Data



The purity of Human DLL4 is greater than 95% as determined by SEC-HPLC.

ELISA Data

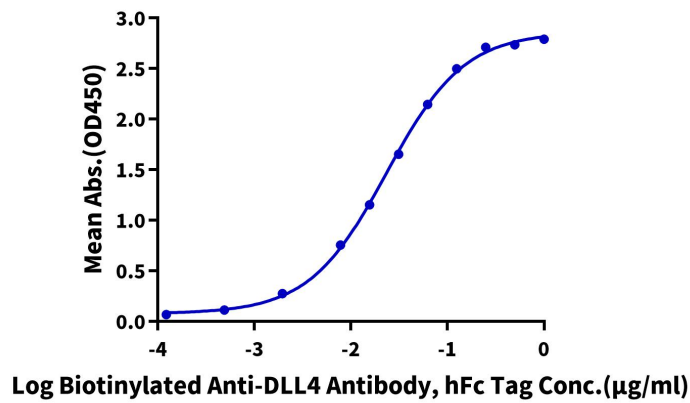
**Human DLL4, hFc Tag ELISA**  
0.1µg Human Notch 1, His Tag Per Well



Immobilized Human Notch 1, His Tag at 1µg/ml (100µl/well) on the plate. Dose response curve for Human DLL4, hFc Tag with the EC50 of 10.3ng/ml determined by ELISA (QC Test).

ELISA Data

**Human DLL4, hFc Tag ELISA**  
0.1µg Human DLL4, hFc Tag Per Well



Immobilized Human DLL4, hFc Tag at 1µg/ml (100µl/Well) on the plate. Dose response curve for Biotinylated Anti-DLL4 Antibody, hFc Tag with the EC50 of 23.5ng/ml determined by ELISA.

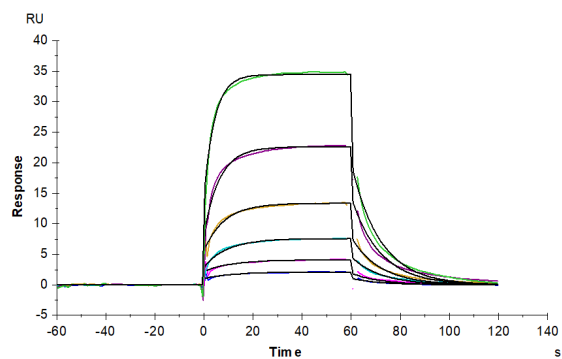
SPR Data

## Human DLL4 Protein, Ultra Low Endotoxin

Cat. No. DLL-HM204-UL



### Assay Data



Human DLL4, hFc Tag captured on CM5 Chip via Protein A can bind Human Notch 1, His Tag with an affinity constant of 0.48  $\mu$ M as determined in SPR assay (Biacore T200).