

Human DLL3 (EGF like3&4) Protein

Cat. No. DLL-HM2D3

Description

Source	Recombinant Human DLL3 (EGF like3&4) Protein is expressed from HEK293 with hFc (IgG1) tag at the C-terminus. It contains Val311-His390.
Accession	Q9NYJ7-1
Molecular Weight	The protein has a predicted MW of 34.25 kDa. Due to glycosylation, the protein migrates to 38-48 kDa based on Bis-Tris PAGE result.
Endotoxin	Less than 1 EU per µg by the LAL method.
Purity	> 95% as determined by Bis-Tris PAGE > 95% as determined by HPLC

Formulation and Storage

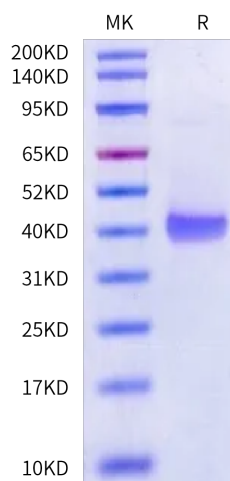
Formulation	Lyophilized from 0.22 µm filtered solution in PBS, 200mM L-arginine (pH 7.4). Normally 8% trehalose is added as protectant before lyophilization.
Reconstitution	Dissolve the lyophilized protein in distilled water. Please refer to the Certificate of Analysis for detailed instructions.
Storage	-20 to -80°C for 12 months as supplied from date of receipt. -80°C for 3 months after reconstitution. Recommend to aliquot the protein into smaller quantities for optimal storage. Please minimize freeze-thaw cycles.

Background

Delta-like protein 3 (DLL3) is a transmembrane protein that belongs to the Delta/Serrate/Lag-2 (DSL) family of Notch ligands. DLL3 inhibits primary neurogenesis. May be required to divert neurons along a specific differentiation pathway. Plays a role in the formation of somite boundaries during segmentation of the paraxial mesoderm (By similarity).

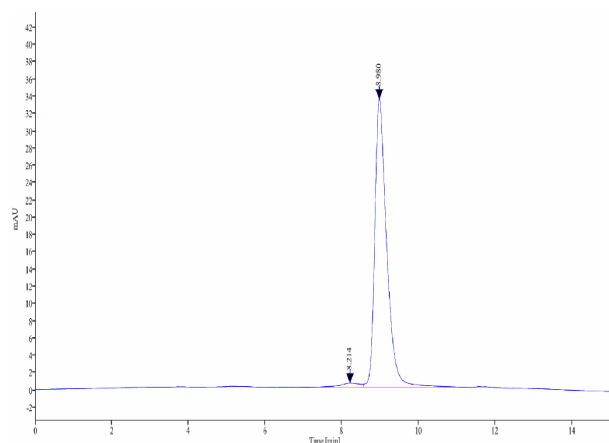
Assay Data

Bis-Tris PAGE



Human DLL3 (EGF like3&4) on Bis-Tris PAGE under reduced condition. The purity is greater than 95%.

SEC-HPLC



The purity of Human DLL3 (EGF like3&4) is greater than 95% as determined by SEC-HPLC.

Human DLL3 (EGF like3&4) Protein

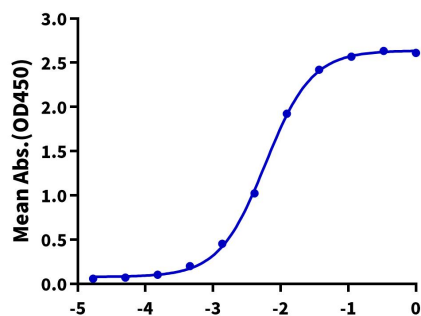
Cat. No. DLL-HM2D3

Assay Data

ELISA Data

Human DLL3, hFc Tag ELISA

0.05µg Human DLL3, hFc Tag Per Well



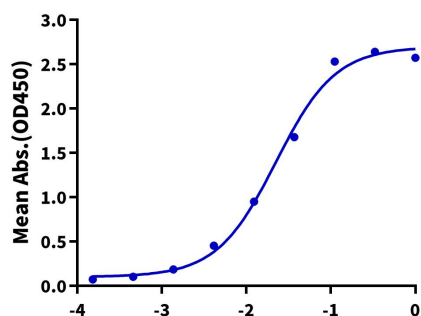
Log Biotinylated Anti-DLL3 Antibody 1, hFc Tag Conc.(µg/ml)

Immobilized Human DLL3, hFc Tag at 0.5µg/ml (100µl/well) on the plate. Dose response curve for Biotinylated Anti-DLL3 Antibody 1, hFc Tag with the EC50 of 6.0ng/ml determined by ELISA.

ELISA Data

Human DLL3, hFc Tag ELISA

0.05µg Human DLL3, hFc Tag Per Well



Log Biotinylated Anti-DLL3 Antibody 2, hFc Avi Tag Conc.(µg/ml)

Immobilized Human DLL3, hFc Tag at 0.5µg/ml(100µl/well) on the plate. Dose response curve for Biotinylated Anti-DLL3 Antibody 2, hFc Avi Tag with the EC50 of 22.5ng/ml determined by ELISA.