

# Rhesus macaque DLL3 Protein

Cat. No. DLL-RM103



## Description

<b>Source</b>	Recombinant Rhesus macaque DLL3 Protein is expressed from HEK293 with His tag at the N-Terminus. It contains Ala27-Arg490.
<b>Accession</b>	F6TFV4
<b>Molecular Weight</b>	The protein has a predicted MW of 51 kDa. Due to glycosylation, the protein migrates to 50-60 kDa based on Bis-Tris PAGE result.
<b>Endotoxin</b>	Less than 1EU per µg by the LAL method.
<b>Purity</b>	> 95% as determined by Bis-Tris PAGE > 95% as determined by HPLC

## Formulation and Storage

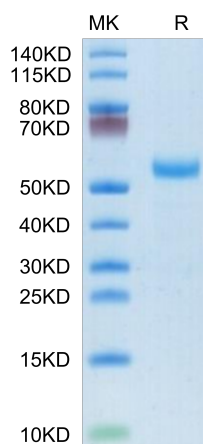
<b>Formulation</b>	Lyophilized from 0.22µm filtered solution in 20mM Tris, 50mM NaCl, 200mM L-arginine (pH 8.5) / PBS (pH 7.4). Normally 8% trehalose is added as protectant before lyophilization.
<b>Reconstitution</b>	Centrifuge the tube before opening. Reconstituting to a concentration more than 100 µg/ml is recommended. Dissolve the lyophilized protein in distilled water.
<b>Storage</b>	-20 to -80°C for 12 months as supplied from date of receipt. -80°C for 3 months after reconstitution. Recommend to aliquot the protein into smaller quantities for optimal storage. Please minimize freeze-thaw cycles.

## Background

Delta-like protein 3 (DLL3) is a transmembrane protein that belongs to the Delta/Serrate/Lag-2 (DSL) family of Notch ligands. DLL3 inhibits primary neurogenesis. May be required to divert neurons along a specific differentiation pathway. Plays a role in the formation of somite boundaries during segmentation of the paraxial mesoderm (By similarity).

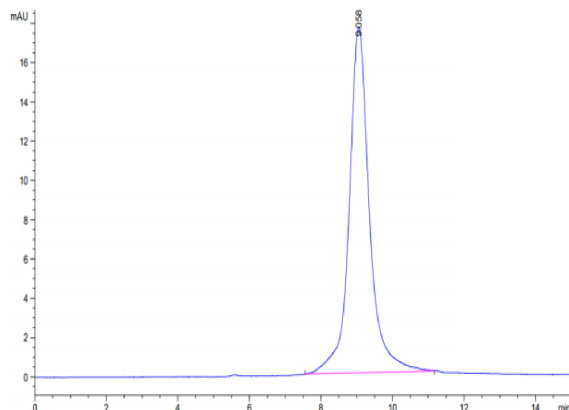
## Assay Data

### Bis-Tris PAGE



Rhesus macaque DLL3 on Bis-Tris PAGE under reduced condition. The purity is greater than 95%.

### SEC-HPLC



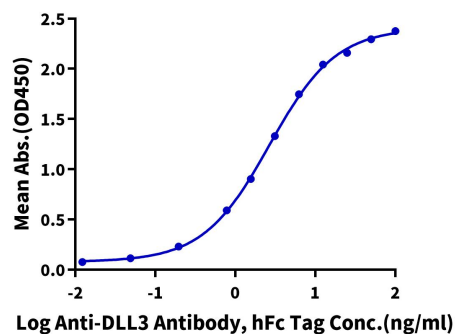
The purity of Rhesus macaque DLL3 is greater than 95% as determined by SEC-HPLC.

Assay Data

ELISA Data

**Rhesus macaque DLL3, His Tag ELISA**

0.1  $\mu$ g Rhesus macaque DLL3, His Tag Per Well



Immobilized Rhesus macaque DLL3, His Tag at 1  $\mu$ g/ml (100  $\mu$ l/well) on the plate. Dose response curve for Anti-DLL3 Antibody, hFc Tag with the EC50 of 2.7ng/ml determined by ELISA.