

Human DPPIV/CD26 Protein

Cat. No. DPV-HM226



Description

Source	Recombinant Human DPPIV/CD26 Protein is expressed from HEK293 with hFc (IgG1) tag at the N-Terminus. It contains Asn29-Pro766.
Accession	P27487
Molecular Weight	The protein has a predicted MW of 111.2 kDa. Due to glycosylation, the protein migrates to 115-130 kDa based on Bis-Tris PAGE result.
Endotoxin	Less than 1 EU per μg by the LAL method.
Purity	> 95% as determined by Bis-Tris PAGE > 95% as determined by HPLC

Formulation and Storage

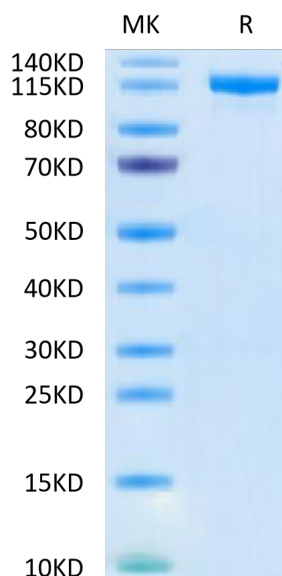
Formulation	Supplied as 0.22 μm filtered solution in PBS, 20% Glycerol (pH 7.4).
Storage	Valid for 12 months from date of receipt when stored at -80°C . Recommend to aliquot the protein into smaller quantities for optimal storage. Please minimize freeze-thaw cycles.

Background

CD26/dipeptidyl peptidase (DPP)IV is a membrane-bound protein found in many cell types of the body, and a soluble form is present in body fluids. There is longstanding evidence that various primary tumors and also metastases express DPPIV/CD26 to a variable extent.

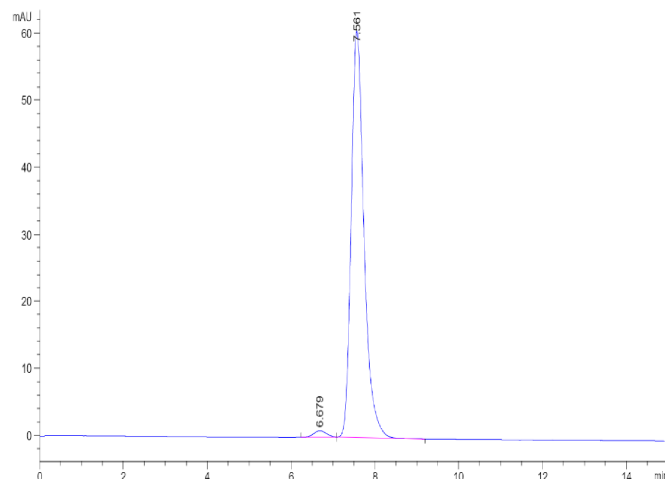
Assay Data

Bis-Tris PAGE



Human DPPIV on Bis-Tris PAGE under reduced condition. The purity is greater than 95%.

SEC-HPLC



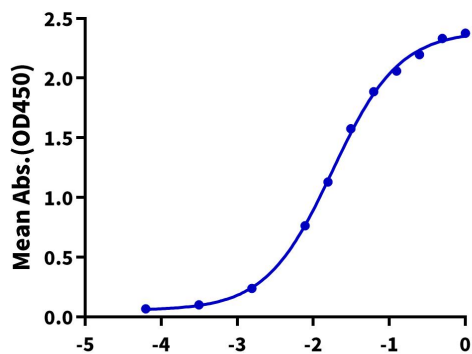
The purity of Human DPPIV is greater than 95% as determined by SEC-HPLC.

Assay Data

ELISA Data

Human DPPIV, hFc Tag ELISA

0.1µg Human DPPIV, hFc Tag Per Well



Immobilized Human DPPIV, hFc Tag at 1 µg/ml (100 µl/well) on the plate. Dose response curve for Biotinylated Anti-DPPIV Antibody, hFc Tag with the EC50 of 17.9 ng/ml determined by ELISA (QC Test).

Log Biotinylated Anti-DPPIV Antibody, hFc Tag Conc.(µg/ml)

Bioactivity Data

Measured by its ability to cleave the fluorogenic peptide substrate, Gly-Pro-7-amido-4-methylcoumarin (GP-AMC). The specific activity is > 3500 pmol/min/µg (QC Test).