

# Human EMAP-II/AIMP1 Protein

Cat. No. EAP-HE102

## Description

<b>Source</b>	Recombinant Human EMAP-II/AIMP1 Protein is expressed from E.coli with His tag at the N-Terminus. It contains Ala2-Lys312.
<b>Accession</b>	Q12904-1
<b>Molecular Weight</b>	The protein has a predicted MW of 35.4 kDa. The protein migrates to 40-45 kDa based on Tris-Bis PAGE result.
<b>Endotoxin</b>	Less than 1EU per µg by the LAL method.
<b>Purity</b>	> 95% as determined by Tris-Bis PAGE

## Formulation and Storage

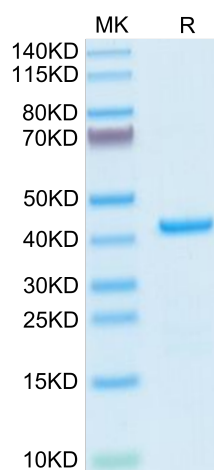
<b>Formulation</b>	Supplied as 0.22µm filtered solution in 20mM Tris, 500mM NaCl, 10% Glycerol (pH 8.0).
<b>Storage</b>	Valid for 12 months from date of receipt when stored at -80°C. Recommend to aliquot the protein into smaller quantities for optimal storage. Please minimize freeze-thaw cycles.

## Background

The potent antiangiogenic and proinflammatory protein Endothelial Monocyte Activating Polypeptide II (EMAP II) has been described as a mediator of pulmonary vascular and alveolar formation and its expression is inversely related to the periods of vascularization and alveolarization in the developing lung. Hence the study of EMAP II could play a vital role in studying and devising appropriate therapeutics for diseases of aberrant lung development, such as BPD.

## Assay Data

### Tris-Bis PAGE

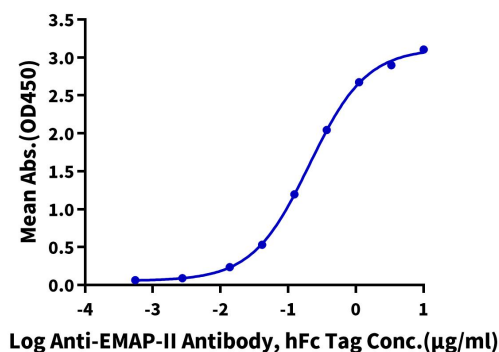


Human EMAP-II on Tris-Bis PAGE under reduced condition. The purity is greater than 95%.

### ELISA Data

#### Human EMAP-II, His Tag ELISA

0.2µg Human EMAP-II, His Tag Per Well



Immobilized Human EMAP-II, His Tag at 2µg/ml (100µl/well) on the plate. Dose response curve for Anti-EMAP-II Antibody, hFc Tag with the EC50 of 0.21µg/ml determined by ELISA.