

Human EFEMP1 Protein

Cat. No. EFE-HM101

Description

Source	Recombinant Human EFEMP1 Protein is expressed from HEK293 with His tag at the N-Terminus. It contains Gln18-Phe493.
Accession	Q12805-1
Molecular Weight	The protein has a predicted MW of 53.9 kDa. Due to glycosylation, the protein migrates to 55-60 kDa based on Bis-Tris PAGE result.
Endotoxin	Less than 1EU per μg by the LAL method.
Purity	> 95% as determined by Bis-Tris PAGE

Formulation and Storage

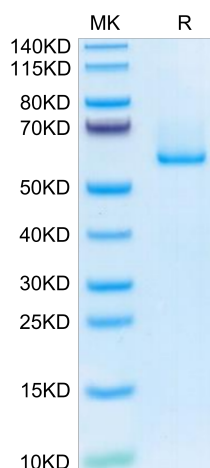
Formulation	Supplied as 0.22 μm filtered solution in PBS (pH 7.4).
Storage	Valid for 12 months from date of receipt when stored at -80°C. Recommend to aliquot the protein into smaller quantities for optimal storage. Please minimize freeze-thaw cycles.

Background

Transversalis fascia EFEMP1, TIMP3 and ELN expressions were decreased, but MMP9 expression was increased in IH patients compared with controls. In IH patients, EFEMP1 was not correlated with TIMP3, but positively correlated with ELN and negatively correlated with MMP9; TIMP3 negatively correlated with MMP9, but positively correlated with ELN. In addition, EFEMP1 suppressed L929 cell migration and invasion.

Assay Data

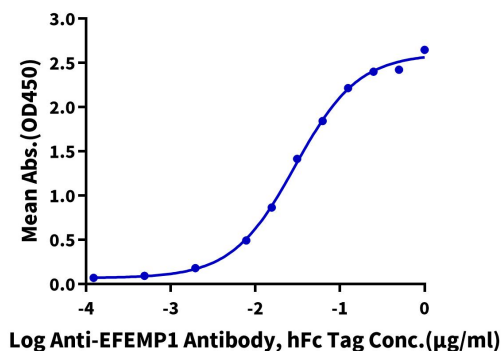
Bis-Tris PAGE



Human EFEMP1 on Bis-Tris PAGE under reduced condition. The purity is greater than 95%.

ELISA Data

Human EFEMP1, His Tag ELISA
0.2 μg Human EFEMP1, His Tag Per Well



Immobilized Human EFEMP1, His Tag at 2 $\mu\text{g}/\text{ml}$ (100 $\mu\text{l}/\text{Well}$) on the plate. Dose response curve for Anti-EFEMP1 Antibody, hFc Tag with the EC50 of 29.6ng/ml determined by ELISA (QC Test).