

# FITC-Labeled Human EGFR/HER1 Protein

Cat. No. EGF-HM401F

## Description

<b>Source</b>	Recombinant FITC-Labeled Human EGFR/HER1 Protein is expressed from HEK293 with His tag and Avi tag at the C-Terminus. It contains Leu25-Ser645.
<b>Accession</b>	P00533-1
<b>Molecular Weight</b>	The protein has a predicted MW of 71.5 kDa. Due to glycosylation, the protein migrates to 90-115 kDa based on Bis-Tris PAGE result.
<b>Wavelength</b>	Excitation Wavelength: 490 nm Emission Wavelength: 520 nm
<b>Endotoxin</b>	Less than 1EU per ug by the LAL method.
<b>Purity</b>	> 95% as determined by Bis-Tris PAGE > 95% as determined by HPLC

## Formulation and Storage

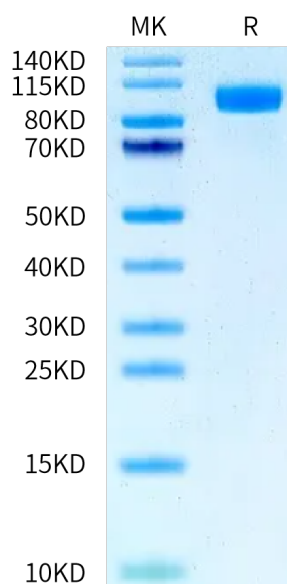
<b>Formulation</b>	Lyophilized from 0.22 µm filtered solution in PBS (pH 7.4). Normally 8% trehalose is added as protectant before lyophilization.
<b>Reconstitution</b>	Centrifuge the tube before opening. Reconstituting to a concentration more than 100 µg/ml is recommended. Dissolve the lyophilized protein in distilled water.
<b>Storage</b>	-20 to -80°C for 12 months as supplied from date of receipt. -80°C for 3-6 months after reconstitution. 2-8°C for 2-7 days after reconstitution. Recommend to aliquot the protein into smaller quantities for optimal storage. Please minimize freeze-thaw cycles.

## Background

The epidermal growth factor receptor is a transmembrane protein that is a receptor for members of the epidermal growth factor family of extracellular protein ligands. The epidermal growth factor receptor is a member of the ErbB family of receptors, a subfamily of four closely related receptor tyrosine kinases: EGFR, HER2/neu, Her 3 and Her 4. Receptor tyrosine kinase binding ligands of the EGF family and activating several signaling cascades to convert extracellular cues into appropriate cellular responses.

## Assay Data

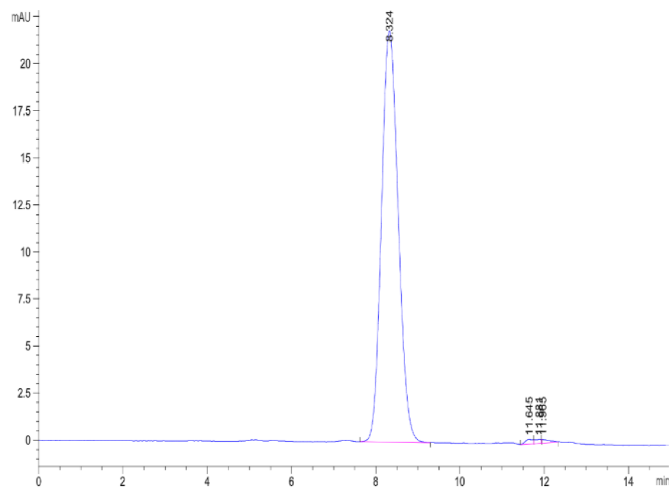
### Bis-Tris PAGE



FITC-Labeled Human EGFR on Bis-Tris PAGE under reduced condition. The purity is greater than 95%.

### SEC-HPLC

Assay Data



The purity of FITC-Labeled Human EGFR is greater than 95% as determined by SEC-HPLC.