

Human Ephrin-B2/EFNB2 Protein

Cat. No. ENB-HM201



Description

Source	Recombinant Human Ephrin-B2/EFNB2 Protein is expressed from HEK293 with hFc tag at the C-Terminus.
	It contains Ile28-Ala229.
Accession	NP_004084.1
Molecular Weight	The protein has a predicted MW of 49 kDa. Due to glycosylation, the protein migrates to 50-70 kDa based on Tris-Bis PAGE result.
Endotoxin	Less than 1EU per µg by the LAL method.
Purity	> 95% as determined by Tris-Bis PAGE
	> 95% as determined by HPLC

Formulation and Storage

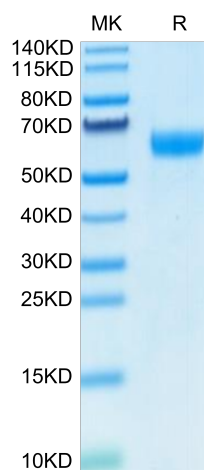
Formulation	Lyophilized from 0.22µm filtered solution in PBS (pH 7.4). Normally 8% trehalose is added as protectant before lyophilization.
Reconstitution	Centrifuge the tube before opening. Reconstituting to a concentration more than 100 µg/ml is recommended. Dissolve the lyophilized protein in distilled water.
Storage	-20 to -80°C for 12 months as supplied from date of receipt. -80°C for 3-6 months after reconstitution. 2-8°C for 2-7 days after reconstitution. Recommend to aliquot the protein into smaller quantities for optimal storage. Please minimize freeze-thaw cycles.

Background

Ephrin-B2 controls platelet-derived growth factor receptor β (PDGFR β) distribution in the VSMC plasma membrane, endocytosis, and signaling in a fashion that is highly distinct from its role in the endothelium. Ephrin-B2 is an important regulator of PDGFR β endocytosis and thereby acts as a molecular switch controlling the downstream signaling activity of this receptor in mural cells.

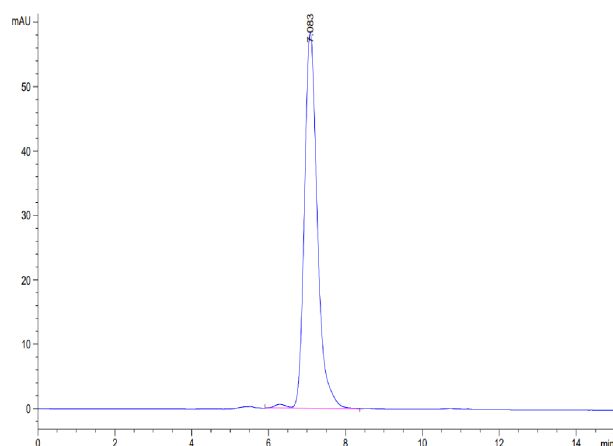
Assay Data

Tris-Bis PAGE



Human Ephrin B2 on Tris-Bis PAGE under reduced condition. The purity is greater than 95%.

SEC-HPLC



The purity of Human Ephrin B2 is greater than 95% as determined by SEC-HPLC.

Human Ephrin-B2/EFNB2 Protein

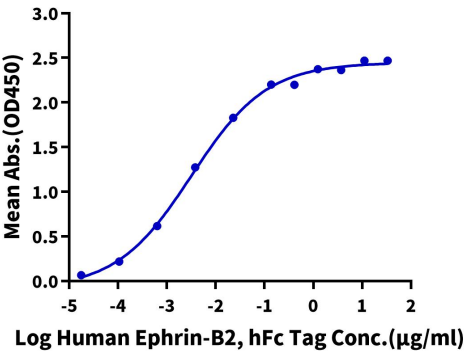
Cat. No. ENB-HM201



Assay Data

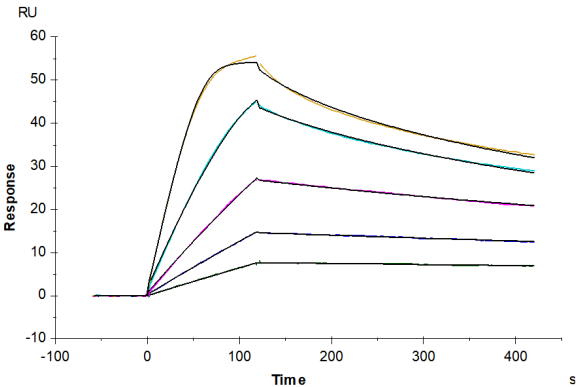
ELISA Data

Human Ephrin-B2, hFc Tag ELISA
0.1µg Human EPHB2, His Tag Per Well



Immobilized Human EPHB2, His Tag at 1µg/ml (100µl/well) on the plate. Dose response curve for Human Ephrin-B2, hFc Tag with the EC50 of 3.2ng/ml determined by ELISA (QC Test).

SPR Data



Human Ephrin-B2, hFc Tag captured on CM5 Chip via Protein A can bind Human EPHB2, His Tag with an affinity constant of 82.97 pM as determined in SPR assay (Biacore T200).