

Cynomolgus EPHA10 Protein, Ultra Low Endotoxin

Cat. No. EPH-CM110-UL

Description

Source	Recombinant Cynomolgus EPHA10 Protein is expressed from HEK293 with His tag at the C-Terminus. It contains Glu34-Ala565.
Accession	XP_045230088.1
Molecular Weight	The protein has a predicted MW of 58.56 kDa. Due to glycosylation, the protein migrates to 68-78 kDa based on Bis-Tris PAGE result.
Endotoxin	Less than 0.01 EU per µg by the LAL method.
Purity	> 95% as determined by Bis-Tris PAGE > 90% as determined by HPLC

Formulation and Storage

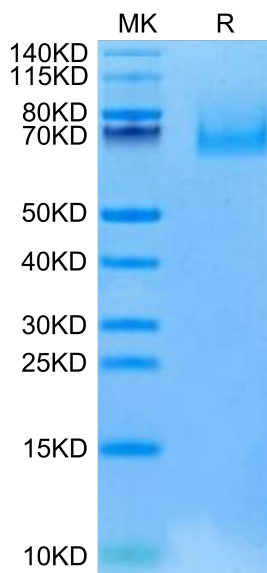
Formulation	Lyophilized from 0.22µm filtered solution in PBS (pH 7.4). Normally 8% trehalose is added as protectant before lyophilization.
Reconstitution	Dissolve the lyophilized protein in distilled water. Please refer to the Certificate of Analysis for detailed instructions.
Storage	-20 to -80°C for 12 months as supplied from date of receipt. -80°C for 3 months after reconstitution. Recommend to aliquot the protein into smaller quantities for optimal storage. Please minimize freeze-thaw cycles.

Background

EphA10 (erythropoietin-producing hepatocellular carcinoma receptor A10) is a catalytically defective receptor protein tyrosine kinase in the ephrin receptor family. EphA10 was elevated and higher in tumor tissues than in normal tissues in some cancer types, including pancreatic cancer. EphA10 silencing reduced the proliferation, migration, and adhesion of MIA PaCa-2 and AsPC-1 pancreatic cancer cells. EphA10 plays a pivotal role in the tumorigenesis of pancreatic epithelial cells and is a novel therapeutic target for pancreatic cancer.

Assay Data

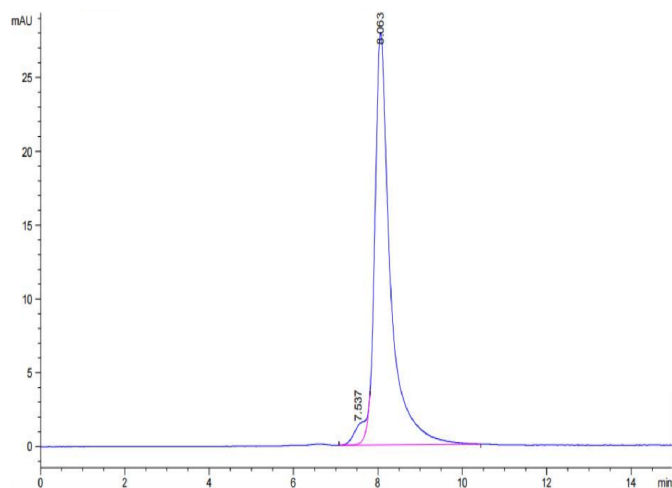
Bis-Tris PAGE



Cynomolgus EPHA10 on Bis-Tris PAGE under reduced condition. The purity is greater than 95%.

SEC-HPLC

Assay Data



The purity of Cynomolgus EPHA10 is greater than 90% as determined by SEC-HPLC.