

Biotinylated Cynomolgus EPHA2 Protein

Cat. No. EPH-CM4A2B



Description

Source	Recombinant Biotinylated Cynomolgus EPHA2 Protein is expressed from HEK293 with His tag and Avi tag at the C-Terminus.
	It contains Ala24-Ser534.
Accession	Q1KL86
Molecular Weight	The protein has a predicted MW of 59.2 kDa. Due to glycosylation, the protein migrates to 55-70 kDa based on Bis-Tris PAGE result.
Endotoxin	Less than 1EU per µg by the LAL method.
Purity	> 95% as determined by Bis-Tris PAGE
	> 95% as determined by HPLC

Formulation and Storage

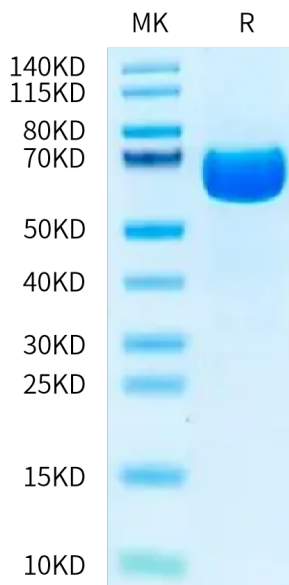
Formulation	Lyophilized from 0.22 µm filtered solution in PBS (pH 7.4). Normally 8% trehalose is added as protectant before lyophilization.
Reconstitution	Centrifuge the tube before opening. Reconstituting to a concentration more than 100 µg/ml is recommended. Dissolve the lyophilized protein in distilled water.
Storage	-20 to -80°C for 12 months as supplied from date of receipt. -80°C for 3-6 months after reconstitution. 2-8°C for 2-7 days after reconstitution. Recommend to aliquot the protein into smaller quantities for optimal storage. Please minimize freeze-thaw cycles.

Background

Ephrin type-A receptor 2 (EPHA2) is a receptor tyrosine kinase (RTK), whose over-expression has been observed in a variety of cancers, including breast cancer. EPHA2 expression may be causally related to tumorigenesis; therefore, it is important to understand how EPHA2 gene (EPHA2) expression is regulated.

Assay Data

Bis-Tris PAGE



Biotinylated Cynomolgus EPHA2 on Bis-Tris PAGE under reduced condition. The purity is greater than 95%.

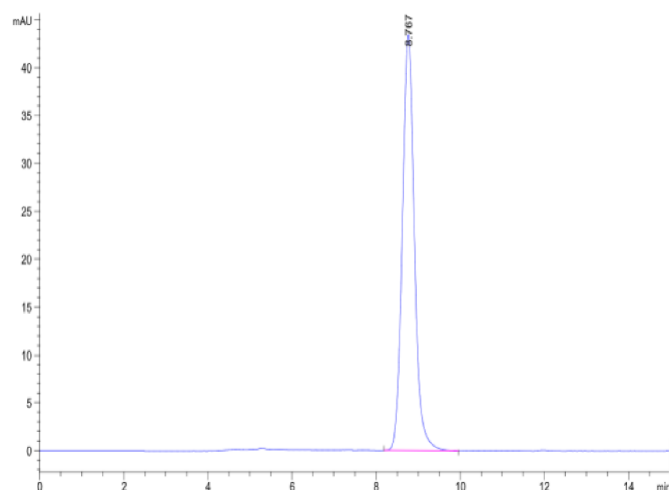
SEC-HPLC

Biotinylated Cynomolgus EPHA2 Protein

Cat. No. EPH-CM4A2B



Assay Data



The purity of Biotinylated Cynomolgus EPHA2 is greater than 95% as determined by SEC-HPLC.