

# Canine EPHA3 Protein

Cat. No. EPH-DM101



## Description

<b>Source</b>	Recombinant Canine EPHA3 Protein is expressed from HEK293 with His tag at the C-Terminus. It contains Met1-His514.
<b>Accession</b>	F1P925
<b>Molecular Weight</b>	The protein has a predicted MW of 58.97 kDa. Due to glycosylation, the protein migrates to 60-65 kDa based on Bis-Tris PAGE result.
<b>Endotoxin</b>	Less than 1EU per $\mu\text{g}$ by the LAL method.
<b>Purity</b>	> 95% as determined by Bis-Tris PAGE > 95% as determined by HPLC

## Formulation and Storage

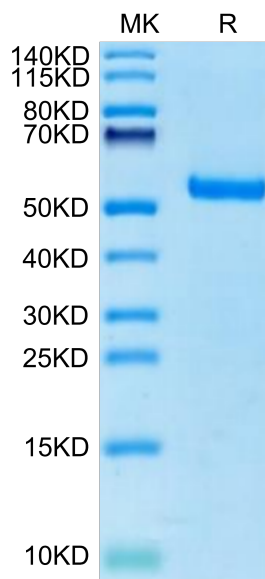
<b>Formulation</b>	Supplied as 0.22 $\mu\text{m}$ filtered solution in PBS (pH 7.4).
<b>Storage</b>	Valid for 12 months from date of receipt when stored at -80°C. Recommend to aliquot the protein into smaller quantities for optimal storage. Please minimize freeze-thaw cycles.

## Background

Erythropoietin-producing hepatocellular carcinoma cell surface type A receptor 3 (EPHA3) has been found to promote the proliferation and survival of prostate cancer (PCa) cell lines and prostate tumor development in nude mice. The interaction of AR and SP1 contributes to regulate EPHA3 expression, and the SP1 binding sites (295~261) in the EPHA3 core promoter region is crucial to the regulation of EPHA3 expression in response to androgen hormone stimuli.

## Assay Data

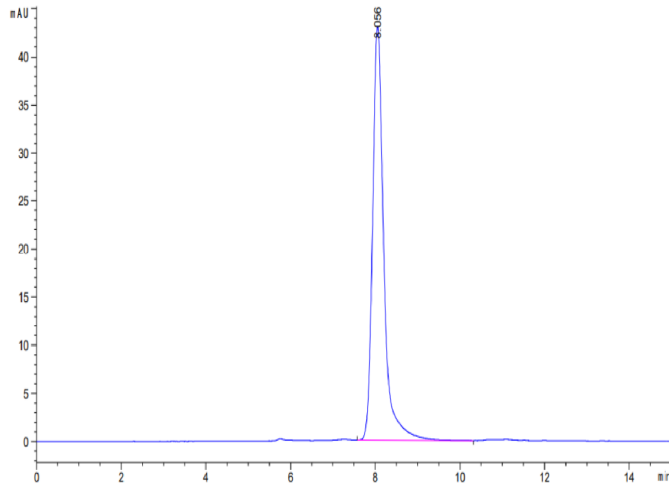
### Bis-Tris PAGE



Canine EPHA3 on Bis-Tris PAGE under reduced condition. The purity is greater than 95%.

### SEC-HPLC

Assay Data



The purity of Canine EPHA3 is greater than 95% as determined by SEC-HPLC.