

Canine EPHA3 Protein

Cat. No. EPH-DM101

Description

Source	Recombinant Canine EPHA3 Protein is expressed from HEK293 with His tag at the C-Terminus. It contains Met1-His514.
Accession	F1P925
Molecular Weight	The protein has a predicted MW of 58.97 kDa. Due to glycosylation, the protein migrates to 60-65 kDa based on Tris-Bis PAGE result.
Endotoxin	Less than 1EU per µg by the LAL method.
Purity	> 95% as determined by Tris-Bis PAGE > 95% as determined by HPLC

Formulation and Storage

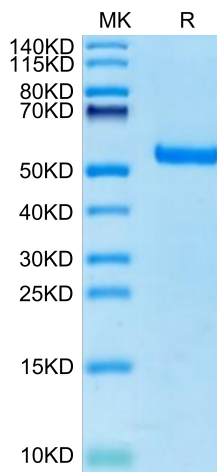
Formulation	Lyophilized from 0.22µm filtered solution in PBS (pH 7.4). Normally 8% trehalose is added as protectant before lyophilization.
Reconstitution	Centrifuge the tube before opening. Reconstituting to a concentration more than 100 µg/ml is recommended. Dissolve the lyophilized protein in distilled water.
Storage	-20 to -80°C for 12 months as supplied from date of receipt. -20 to -80°C for 3-6 months in unopened state after reconstitution. 2-8°C for 2-7 days after reconstitution. Recommend to aliquot the protein into smaller quantities for optimal storage. Please minimize freeze-thaw cycles.

Background

Erythropoietin-producing hepatocellular carcinoma cell surface type A receptor 3 (EPHA3) has been found to promote the proliferation and survival of prostate cancer (PCa) cell lines and prostate tumor development in nude mice. The interaction of AR and SP1 contributes to regulate EPHA3 expression, and the SP1 binding sites (295~261) in the EPHA3 core promoter region is crucial to the regulation of EPHA3 expression in response to androgen hormone stimuli.

Assay Data

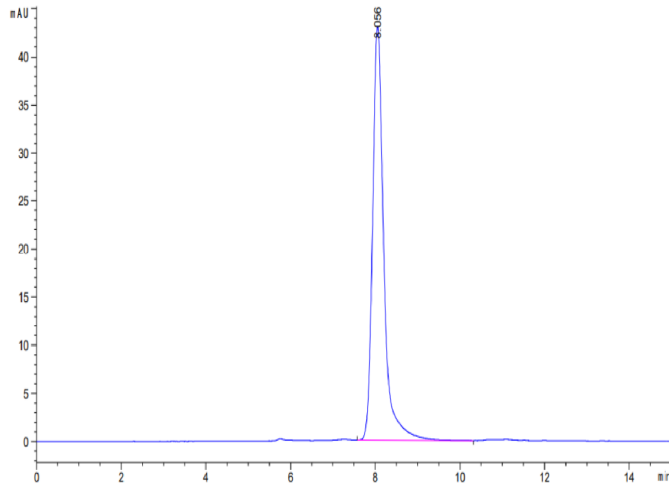
Tris-Bis PAGE



Canine EPHA3 on Tris-Bis PAGE under reduced condition. The purity is greater than 95%.

SEC-HPLC

Assay Data



The purity of Canine EPHA3 is greater than 95% as determined by SEC-HPLC.