

Human EPHA10 Protein, Ultra Low Endotoxin



Cat. No. EPH-HM110-UL

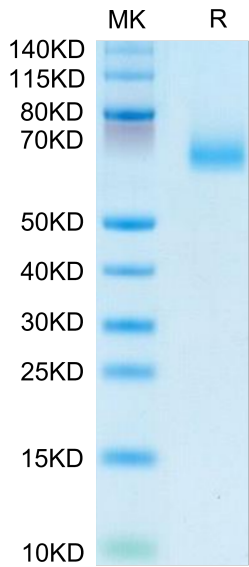
Description	
Source	Recombinant Human EPHA10 Protein is expressed from HEK293 with His tag at the C-Terminus. It contains Glu34-Ala565.
Accession	Q5JZY3-1
Molecular Weight	The protein has a predicted MW of 58.8 kDa. Due to glycosylation, the protein migrates to 60-70 kDa based on Bis-Tris PAGE result.
Endotoxin	Less than 0.01 EU per µg by the LAL method.
Purity	> 95% as determined by Bis-Tris PAGE > 95% as determined by HPLC

Formulation and Storage	
Formulation	Lyophilized from 0.22µm filtered solution in PBS (pH 7.4). Normally 8% trehalose is added as protectant before lyophilization.
Reconstitution	Dissolve the lyophilized protein in distilled water. Please refer to the Certificate of Analysis for detailed instructions.
Storage	-20 to -80°C for 12 months as supplied from date of receipt. -80°C for 3 months after reconstitution. Recommend to aliquot the protein into smaller quantities for optimal storage. Please minimize freeze-thaw cycles.

Background	
EphA10 (erythropoietin-producing hepatocellular carcinoma receptor A10) is a catalytically defective receptor protein tyrosine kinase in the ephrin receptor family. EphA10 was elevated and higher in tumor tissues than in normal tissues in some cancer types, including pancreatic cancer. EphA10 silencing reduced the proliferation, migration, and adhesion of MIA PaCa-2 and AsPC-1 pancreatic cancer cells. EphA10 plays a pivotal role in the tumorigenesis of pancreatic epithelial cells and is a novel therapeutic target for pancreatic cancer.	

Assay Data

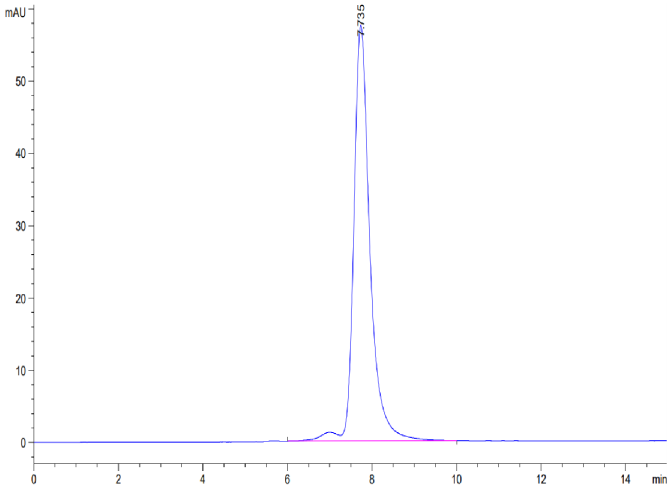
Bis-Tris PAGE



Human EPHA10 on Bis-Tris PAGE under reduced condition. The purity is greater than 95%.

SEC-HPLC

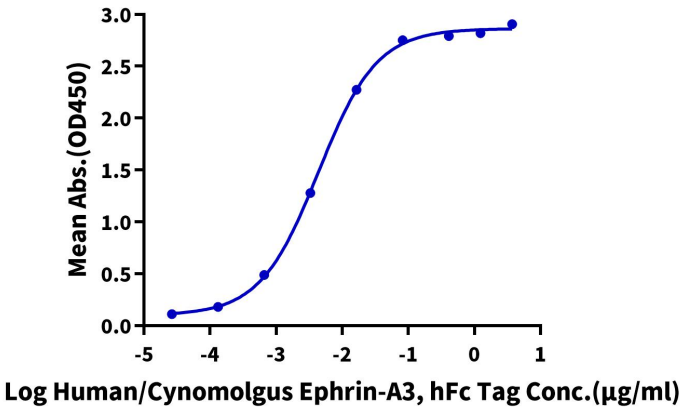
Assay Data



The purity of Human EPHA10 is greater than 95% as determined by SEC-HPLC.

ELISA Data

Human EPHA10, His Tag ELISA
0.5µg Human EPHA10, His Tag Per Well



Immobilized Human EPHA10, His Tag at 5µg/ml (100µl/well) on the plate. Dose response curve for Human/Cynomolgus EFNA3, hFc Tag with the EC50 of 4.4ng/ml determined by ELISA (QC Test).