

Human EPHA2 Protein

Cat. No. EPH-HM1A2



Description

Source	Recombinant Human EPHA2 Protein is expressed from Expi293 with His tag at the C-terminal. It contains Ala24-Val537.
Accession	P29317-1
Molecular Weight	The protein has a predicted MW of 57.56 kDa. Due to glycosylation, the protein migrates to 58-65 kDa based on Tris-Bis PAGE result.
Endotoxin	Less than 1EU per µg by the LAL method.
Purity	> 95% as determined by Tris-Bis PAGE > 95% as determined by HPLC

Formulation and Storage

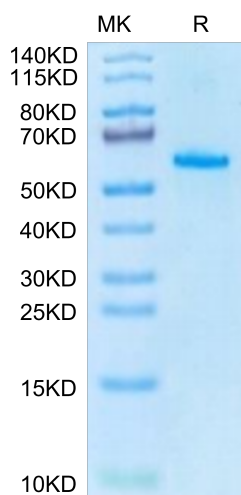
Formulation	Supplied as 0.22µm filtered solution in PBS (pH 7.4). Please dilute to the desired concentration according to the concentration of the solution shown on the product label.
Storage	Valid for 12 months from date of receipt when stored at -80°C. Recommend to aliquot the protein into smaller quantities for optimal storage. Please do not repeated freeze-thaw cycles.

Background

Erythropoietin-producing hepatocellular receptor A2 (EphA2) receptor tyrosine kinase plays an important role in tissue organization and homeostasis in normal organs. EphA2 is overexpressed in a variety of types of solid tumours with oncogenic functions.

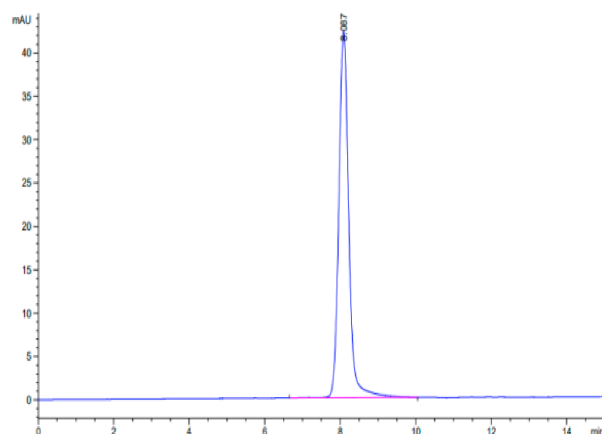
Assay Data

Tris-Bis PAGE



Human EPHA2 on Tris-Bis PAGE under reduced condition. The purity is greater than 95%.

SEC-HPLC



The purity of Human EPHA2 is greater than 95% as determined by SEC-HPLC.