

Human EPHA5 Protein

Cat. No. EPH-HM1A5



Description

Source	Recombinant Human EPHA5 Protein is expressed from HEK293 with His tag at the C-Terminus. It contains Ala26-Pro573.
Accession	P54756-1
Molecular Weight	The protein has a predicted MW of 61.9 kDa. Due to glycosylation, the protein migrates to 68-80 kDa based on Bis-Tris PAGE result.
Endotoxin	Less than 1EU per µg by the LAL method.
Purity	> 95% as determined by Bis-Tris PAGE > 95% as determined by HPLC

Formulation and Storage

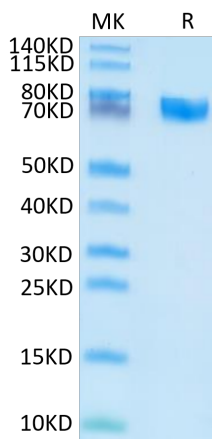
Formulation	Lyophilized from 0.22µm filtered solution in PBS (pH 7.4). Normally 8% trehalose is added as protectant before lyophilization.
Reconstitution	Centrifuge the tube before opening. Reconstituting to a concentration more than 100 µg/ml is recommended. Dissolve the lyophilized protein in distilled water.
Storage	-20 to -80°C for 12 months as supplied from date of receipt. -80°C for 3 months after reconstitution. Recommend to aliquot the protein into smaller quantities for optimal storage. Please minimize freeze-thaw cycles.

Background

Ephrin type-A receptor 5 (EphA5) expression was detected in all non-tumor gastric epithelia but was differentially expressed among gastric cancer samples. EphA5 is differentially expressed in gastric cancer. EphA5 may therefore be a potential therapeutic target and may have clinical utility as a marker for lymph node metastasis in gastric cancer.

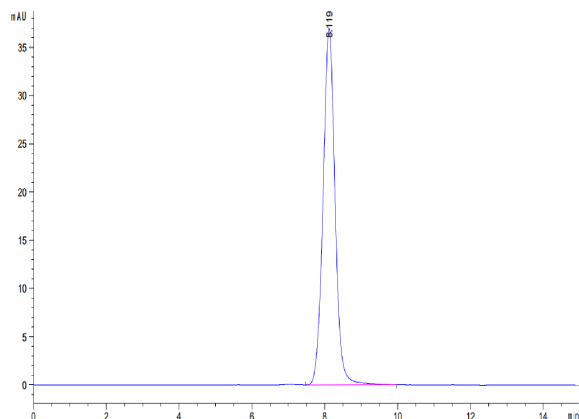
Assay Data

Bis-Tris PAGE



Human EPHA5 on Bis-Tris PAGE under reduced condition. The purity is greater than 95%.

SEC-HPLC



The purity of Human EPHA5 is greater than 95% as determined by SEC-HPLC.