

Human EphA7 Protein

Cat. No. EPH-HM1A7



Description

Source	Recombinant Human EphA7 Protein is expressed from HEK293 with His tag at the C-Terminus. It contains Gln28-Val555.
Accession	NP_004431.1
Molecular Weight	The protein has a predicted MW of 60.13 kDa. Due to glycosylation, the protein migrates to 65-70 kDa based on Tris-Bis PAGE result.
Endotoxin	Less than 1EU per µg by the LAL method.
Purity	> 95% as determined by Tris-Bis PAGE > 95% as determined by HPLC

Formulation and Storage

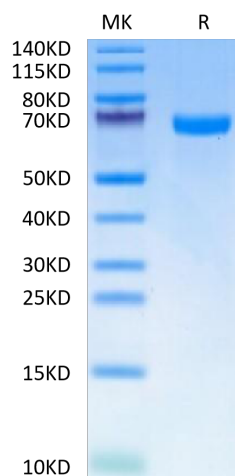
Formulation	Lyophilized from 0.22µm filtered solution in PBS (pH 7.4). Normally 8% trehalose is added as protectant before lyophilization.
Reconstitution	Centrifuge the tube before opening. Reconstituting to a concentration more than 100 µg/ml is recommended. Dissolve the lyophilized protein in distilled water.
Storage	-20 to -80°C for 12 months as supplied from date of receipt. -20 to -80°C for 3-6 months in unopened state after reconstitution. 2-8°C for 2-7 days after reconstitution. Recommend to aliquot the protein into smaller quantities for optimal storage. Please minimize freeze-thaw cycles.

Background

Ephrin receptor A7 (EphA7) is a member of the Eph receptor family. It is widely involved in signal transduction between cells, regulates cell proliferation and differentiation, and participates in developing neural tubes and brain. In addition, EphA7 also has a dual role of tumor promoter and tumor suppressor.

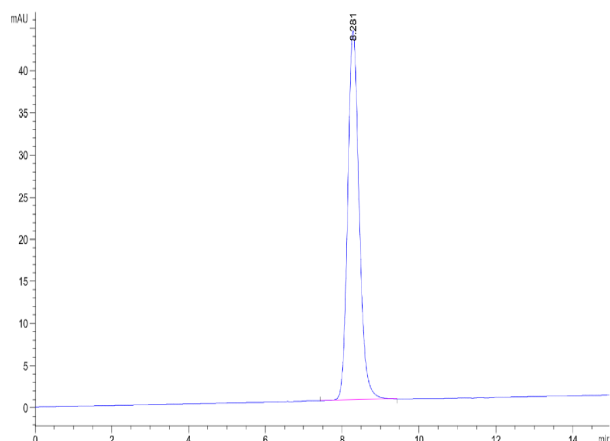
Assay Data

Tris-Bis PAGE



Human EphA7 on Tris-Bis PAGE under reduced condition. The purity is greater than 95%.

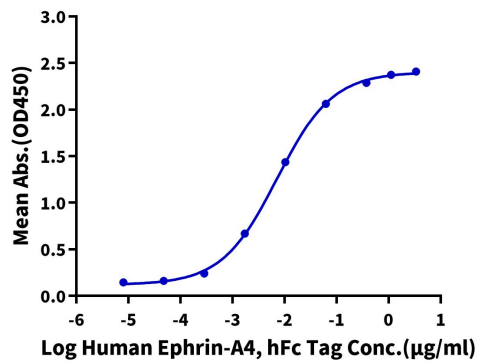
SEC-HPLC



The purity of Human EphA7 is greater than 95% as determined by SEC-HPLC.

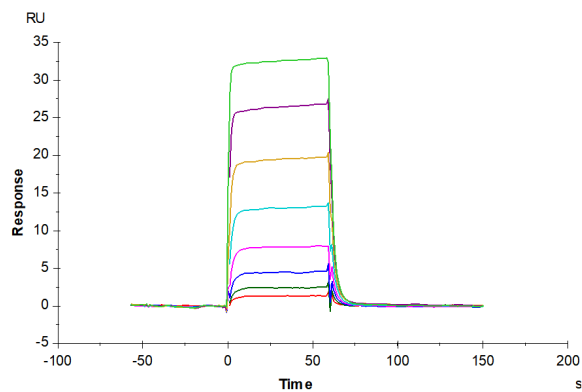
Assay Data

ELISA Data

Human EphA7, His Tag ELISA0.1 μ g Human EphA7, His Tag Per Well

Immobilized Human EphA7, His Tag at 1 μ g/ml (100 μ l/Well) on the plate. Dose response curve for Human Ephrin-A4, hFc Tag with the EC50 of 7.8ng/ml determined by ELISA.

SPR Data



Human EphA7, His Tag immobilized on CM5 Chip can bind Human Ephrin-A4, His Tag with an affinity constant of 0.113 μ M as determined in SPR assay (Biacore T200).