

# Human E-Selectin/CD62E Protein

Cat. No. ESE-HM201

## Description

<b>Source</b>	Recombinant Human E-Selectin/CD62E Protein is expressed from HEK293 with hFc tag at the C-Terminus. It contains Trp22-Pro556.
<b>Accession</b>	P16581
<b>Molecular Weight</b>	The protein has a predicted MW of 85.4 kDa. Due to glycosylation, the protein migrates to 90-130 kDa based on Bis-Tris PAGE result.
<b>Endotoxin</b>	Less than 1EU per $\mu$ g by the LAL method.
<b>Purity</b>	> 95% as determined by Bis-Tris PAGE > 95% as determined by HPLC

## Formulation and Storage

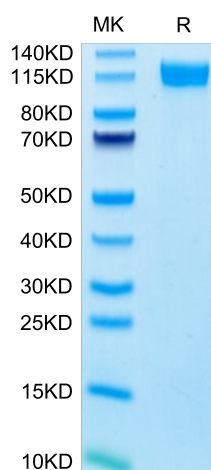
<b>Formulation</b>	Supplied as 0.22 $\mu$ m filtered solution in PBS (pH 7.4).
<b>Storage</b>	Valid for 12 months from date of receipt when stored at -80°C. Recommend to aliquot the protein into smaller quantities for optimal storage. Please minimize freeze-thaw cycles.

## Background

E-Selectin (Endothelial Leukocyte Adhesion Molecule-1, ELAM-1, CD62E), a member of the Selectin family, is a 107 - 115 kDa cell surface glycoprotein. It is transiently expressed on vascular endothelial cells in response to IL-1 beta and TNF-alpha. E-selectin mediates in the adhesion of blood neutrophils in cytokine-activated endothelium through interaction with SELPLG/PSGL1. May have a role in capillary morphogenesis.

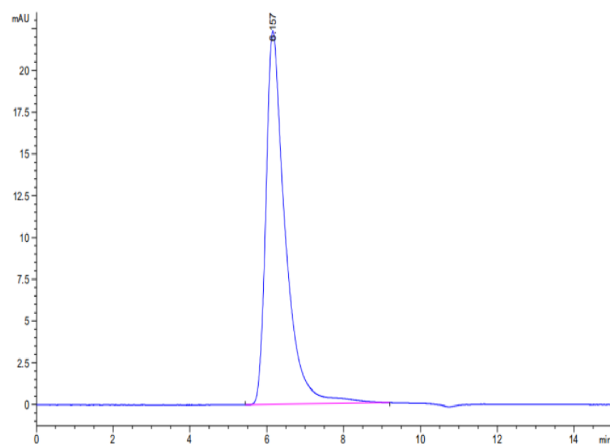
## Assay Data

### Bis-Tris PAGE



Human E-selectin on Bis-Tris PAGE under reduced conditions. The purity is greater than 95%.

### SEC-HPLC



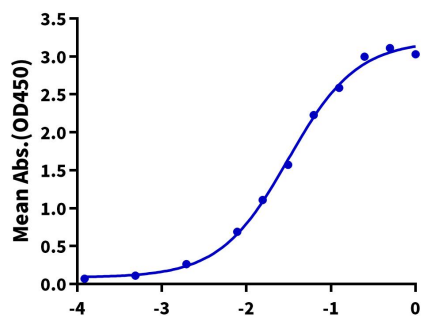
The purity of Human E-selectin is greater than 95% as determined by SEC-HPLC.

Assay Data

ELISA Data

**Human E-Selectin, hFc Tag ELISA**

0.2µg Human E-Selectin, hFc Tag Per Well



Immobilized Human E-Selectin, hFc Tag at 2µg/ml (100µl/Well) on the plate. Dose response curve for Biotinylated Anti-E-Selectin Antibody, hFc Tag with the EC50 31.4ng/ml determined by ELISA (QC Test).

Log Biotinylated Anti-E-Selectin Antibody, hFc Tag Conc. (µg/ml)