

Human E-Selectin/CD62E Protein

Cat. No. ESE-HM201

Description

Source	Recombinant Human E-Selectin/CD62E Protein is expressed from HEK293 with hFc tag at the C-Terminus. It contains Trp22-Pro556.
Accession	P16581
Molecular Weight	The protein has a predicted MW of 85.4 kDa. Due to glycosylation, the protein migrates to 90-130 kDa based on Bis-Tris PAGE result.
Endotoxin	Less than 1EU per μg by the LAL method.
Purity	> 95% as determined by Bis-Tris PAGE > 95% as determined by HPLC

Formulation and Storage

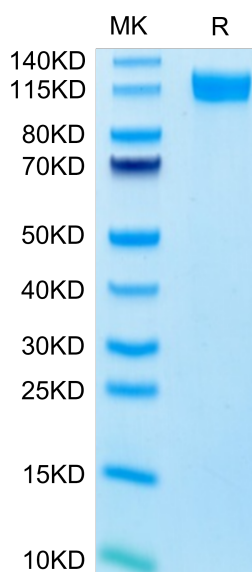
Formulation	Lyophilized from 0.22 μm filtered solution in PBS (pH 7.4). Normally 8% trehalose is added as protectant before lyophilization.
Reconstitution	Centrifuge the tube before opening. Reconstituting to a concentration more than 100 $\mu\text{g}/\text{ml}$ is recommended. Dissolve the lyophilized protein in distilled water.
Storage	-20 to -80°C for 12 months as supplied from date of receipt. -80°C for 3 months after reconstitution. Recommend to aliquot the protein into smaller quantities for optimal storage. Please minimize freeze-thaw cycles.

Background

E-Selectin (Endothelial Leukocyte Adhesion Molecule-1, ELAM-1, CD62E), a member of the Selectin family, is a 107 - 115 kDa cell surface glycoprotein. It is transiently expressed on vascular endothelial cells in response to IL-1 beta and TNF-alpha. E-selectin mediates in the adhesion of blood neutrophils in cytokine-activated endothelium through interaction with SELPLG/PSGL1. May have a role in capillary morphogenesis.

Assay Data

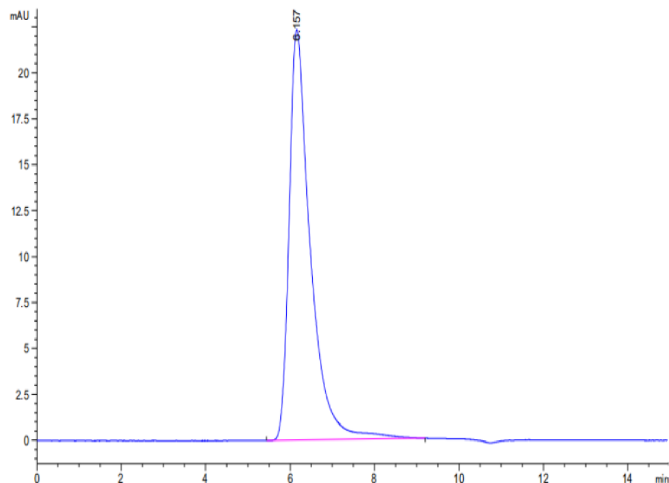
Bis-Tris PAGE



Human E-selectin on Bis-Tris PAGE under reduced conditions. The purity is greater than 95%.

SEC-HPLC

Assay Data

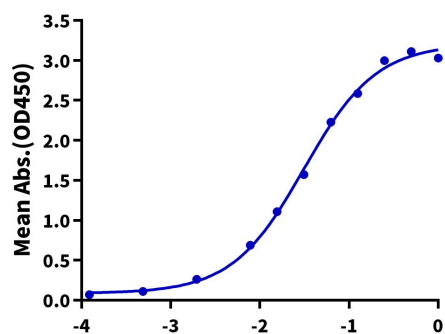


The purity of Human E-selectin is greater than 95% as determined by SEC-HPLC.

ELISA Data

Human E-Selectin, hFc Tag ELISA

0.2µg Human E-Selectin, hFc Tag Per Well



Immobilized Human E-Selectin, hFc Tag at 2µg/ml (100µl/Well) on the plate. Dose response curve for Biotinylated Anti-E-Selectin Antibody, hFc Tag with the EC50 31.4ng/ml determined by ELISA (QC Test).

Log Biotinylated Anti-E-Selectin Antibody, hFc Tag Conc.(µg/ml)