

# Human E-Selectin/CD62E Protein

Cat. No. ESE-HM401

## Description

<b>Source</b>	Recombinant Human E-Selectin/CD62E Protein is expressed from HEK293 with His tag and Avi tag at the C-Terminus. It contains Trp22-Pro556.
<b>Accession</b>	P16581
<b>Molecular Weight</b>	The protein has a predicted MW of 61.6 kDa. Due to glycosylation, the protein migrates to 80-100 kDa based on Tris-Bis PAGE result.
<b>Endotoxin</b>	Less than 1EU per µg by the LAL method.
<b>Purity</b>	> 95% as determined by Tris-Bis PAGE > 95% as determined by HPLC

## Formulation and Storage

<b>Formulation</b>	Lyophilized from 0.22µm filtered solution in PBS (pH 7.4). Normally 8% trehalose is added as protectant before lyophilization.
<b>Reconstitution</b>	Centrifuge the tube before opening. Reconstituting to a concentration more than 100 µg/ml is recommended. Dissolve the lyophilized protein in distilled water.
<b>Storage</b>	-20 to -80°C for 12 months as supplied from date of receipt. -20 to -80°C for 3-6 months in unopened state after reconstitution. 2-8°C for 2-7 days after reconstitution. Recommend to aliquot the protein into smaller quantities for optimal storage. Please minimize freeze-thaw cycles.

## Background

E-Selectin (Endothelial Leukocyte Adhesion Molecule-1, ELAM-1, CD62E), a member of the Selectin family, is a 107 - 115 kDa cell surface glycoprotein. It is transiently expressed on vascular endothelial cells in response to IL-1 beta and TNF-alpha. E-selectin mediates in the adhesion of blood neutrophils in cytokine-activated endothelium through interaction with SELPLG/PSGL1. May have a role in capillary morphogenesis.

## Assay Data

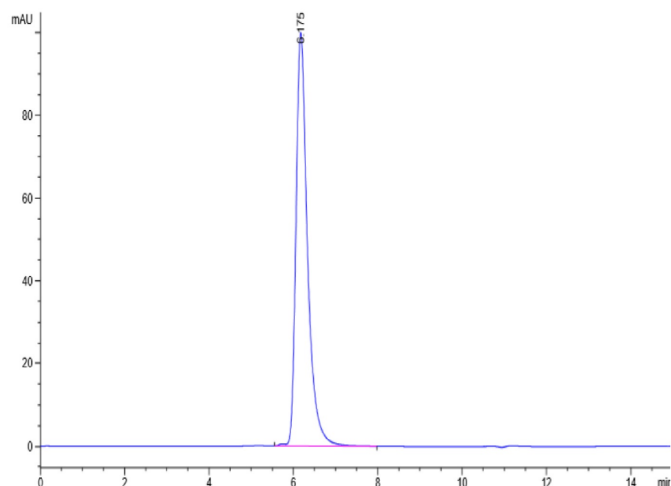
### Tris-Bis PAGE



Human E-selectin on Tris-Bis PAGE under reduced condition. The purity is greater than 95%.

### SEC-HPLC

Assay Data

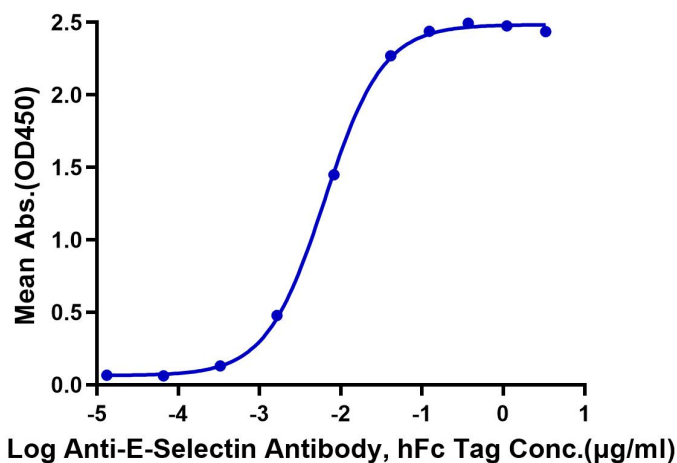


The purity of Human E-selectin is greater than 95% as determined by SEC-HPLC.

ELISA Data

Human E-Selectin, His Tag ELISA

0.05µg Human E-Selectin, His Tag Per Well



Immobilized Human E-Selectin, His Tag at 0.5µg/ml (100µl/Well) on the plate. Dose response curve for Anti-E-Selectin Antibody, hFc Tag with the EC50 of 6.3ng/ml determined by ELISA.