

Mouse E-Selectin/CD62E Protein

Cat. No. ESE-MM101

Description

Source	Recombinant Mouse E-Selectin/CD62E Protein is expressed from HEK293 with His tag at the C-Terminus. It contains Trp22-Pro557.
Accession	Q00690
Molecular Weight	The protein has a predicted MW of 59.6 kDa. Due to glycosylation, the protein migrates to 70-110 kDa based on Bis-Tris PAGE result.
Endotoxin	Less than 1EU per µg by the LAL method.
Purity	> 95% as determined by Bis-Tris PAGE > 95% as determined by HPLC

Formulation and Storage

Formulation	Supplied as 0.22µm filtered solution in PBS (pH 7.4).
Storage	Valid for 12 months from date of receipt when stored at -80°C. Recommend to aliquot the protein into smaller quantities for optimal storage. Please minimize freeze-thaw cycles.

Background

E-Selectin (Endothelial Leukocyte Adhesion Molecule-1, ELAM-1, CD62E), a member of the Selectin family, is a 107 - 115 kDa cell surface glycoprotein. It is transiently expressed on vascular endothelial cells in response to IL-1 beta and TNF-alpha. E-selectin mediates in the adhesion of blood neutrophils in cytokine-activated endothelium through interaction with SELPLG/PSGL1. May have a role in capillary morphogenesis.

Assay Data

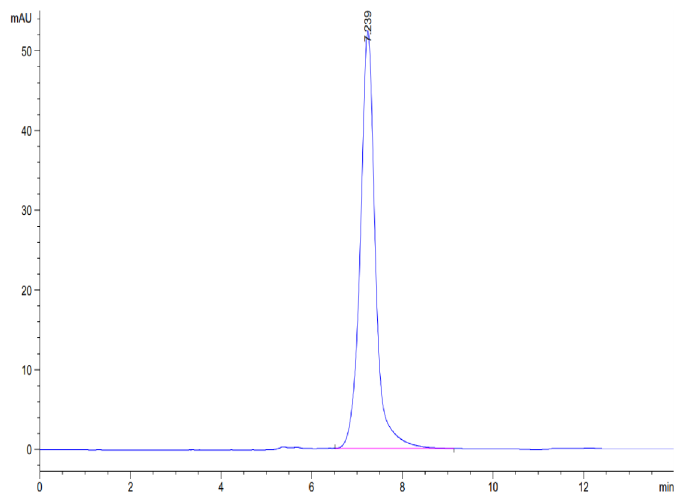
Bis-Tris PAGE



Mouse E-selectin on Bis-Tris PAGE under reduced conditions. The purity is greater than 95%.

SEC-HPLC

Assay Data



The purity of Mouse E-selectin is greater than 95% as determined by SEC-HPLC.