

Human Fas Ligand/TNFSF6 Protein

Cat. No. FAS-HM10L

Description

Source	Recombinant Human Fas Ligand/TNFSF6 Protein is expressed from HEK293 with His tag at the N-Terminus. It contains Pro134-Leu281.
Accession	AAH17502.1
Molecular Weight	The protein has a predicted MW of 18 kDa. Due to glycosylation, the protein migrates to 20-35 kDa based on Bis-Tris PAGE result.
Endotoxin	Less than 1EU per μg by the LAL method.
Purity	> 95% as determined by Bis-Tris PAGE

Formulation and Storage

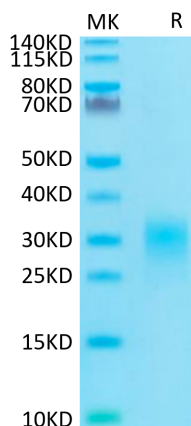
Formulation	Lyophilized from 0.22 μm filtered solution in PBS (pH 7.4). Normally 8% trehalose is added as protectant before lyophilization.
Reconstitution	Centrifuge the tube before opening. Reconstituting to a concentration more than 100 $\mu\text{g}/\text{ml}$ is recommended. Dissolve the lyophilized protein in distilled water.
Storage	-20 to -80°C for 12 months as supplied from date of receipt. -80°C for 3 months after reconstitution. Recommend to aliquot the protein into smaller quantities for optimal storage. Please minimize freeze-thaw cycles.

Background

Fas ligand (FasL, CD95L) is a 40-kDa type II transmembrane protein that binds to Fas (CD95) receptors and promotes programmed cell death. Fas receptors are expressed at higher levels in many tumors than in normal cells. Somewhat paradoxically, elimination of Fas or FasL from tumors also leads to death induced by CD95 receptor/ligand elimination (DICE).

Assay Data

Bis-Tris PAGE

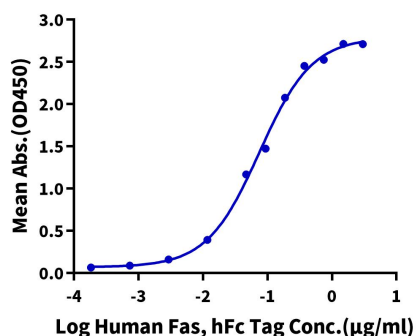


Human Fas Ligand on Bis-Tris PAGE under reduced condition. The purity is greater than 95%.

ELISA Data

Human Fas Ligand, His Tag ELISA

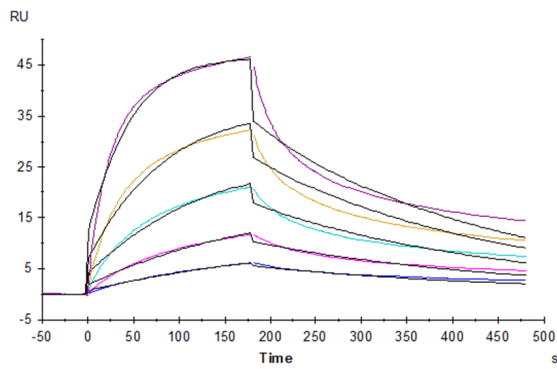
0.2 μg Human Fas Ligand, His Tag Per Well



Immobilized Human Fas Ligand, His Tag at 2 $\mu\text{g}/\text{ml}$ (100 $\mu\text{l}/\text{Well}$) on the plate. Dose response curve for Human Fas, hFc Tag with the EC₅₀ of 75.0ng/ml determined by ELISA (QC Test).

Assay Data

SPR Data



Human Fas, His Tag immobilized on CM5 Chip can bind Human Fas Ligand, His Tag with an affinity constant of 19.45 nM as determined in SPR assay (Biacore T200).