

# Human FCRL2/IRTA4 Protein

Cat. No. FCR-HM102



## Description

<b>Source</b>	Recombinant Human FCRL2/IRTA4 Protein is expressed from HEK293 with His tag at the C-Terminus. It contains Leu20-Val401.
<b>Accession</b>	Q96LA5-1
<b>Molecular Weight</b>	The protein has a predicted MW of 42.7 kDa. Due to glycosylation, the protein migrates to 60-70 kDa based on Tris-Bis PAGE result.
<b>Endotoxin</b>	Less than 1EU per µg by the LAL method.
<b>Purity</b>	> 95% as determined by Tris-Bis PAGE > 95% as determined by HPLC

## Formulation and Storage

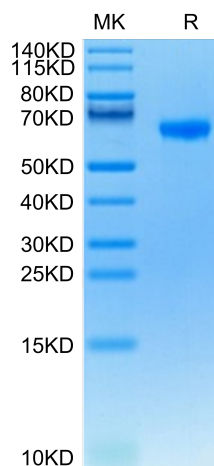
<b>Formulation</b>	Lyophilized from 0.22µm filtered solution in PBS (pH 7.4). Normally 8% trehalose is added as protectant before lyophilization.
<b>Reconstitution</b>	Centrifuge the tube before opening. Reconstituting to a concentration more than 100 µg/ml is recommended. Dissolve the lyophilized protein in distilled water.
<b>Storage</b>	-20 to -80°C for 12 months as supplied from date of receipt. -20 to -80°C for 3-6 months in unopened state after reconstitution. 2-8°C for 2-7 days after reconstitution. Recommend to aliquot the protein into smaller quantities for optimal storage. Please minimize freeze-thaw cycles.

## Background

Fc receptor-like 2 (FCRL2) is highly expressed on B-cell chronic lymphocytic leukemia (B-CLL) cells and could possibly influence disease pathogenesis. FCRL2 mRNA expression was found to be expressed at considerably higher levels in peripheral blood mononuclear cells (PBMC) of B-CLL patients compared to controls (range 1.35- to 210-fold upregulation;  $P < 0.0001$ ) and cells of other hematological diseases.

## Assay Data

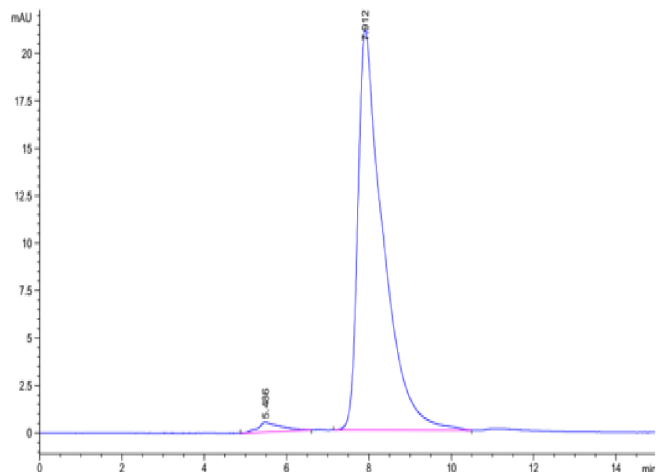
### Tris-Bis PAGE



Human FCRL2 on Tris-Bis PAGE under reduced condition. The purity is greater than 95%.

### SEC-HPLC

Assay Data

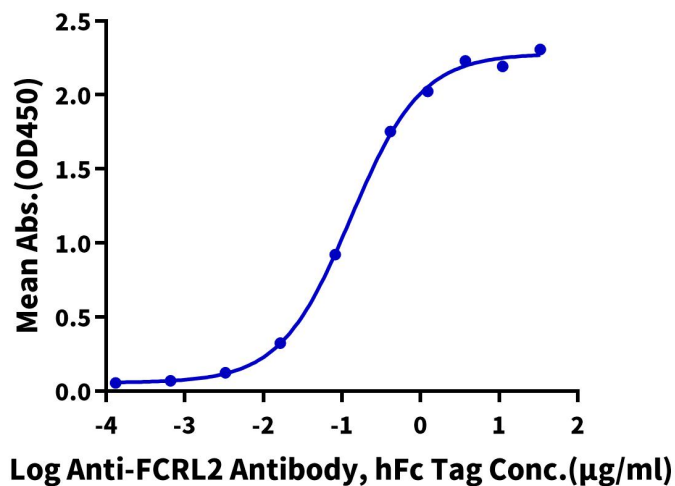


The purity of Human FCRL2 is greater than 95% as determined by SEC-HPLC.

ELISA Data

**Human FCRL2, His Tag ELISA**

0.05µg Human FCRL2, His Tag Per Well



Immobilized Human FCRL2, His Tag at 0.5µg/ml (100µl/well) on the plate. Dose response curve for Anti-FCRL2 Antibody, hFc Tag with the EC50 of 0.13µg/ml determined by ELISA.