

Human FcRH6/FCRL6 Protein

Cat. No. FCR-HM106

Description

Source	Recombinant Human FcRH6/FCRL6 Protein is expressed from Expi293 with His tag at the N-terminal. It contains Leu20-Trp307.
Accession	Q6DN72-1
Molecular Weight	The protein has a predicted MW of 32.8 kDa. Due to glycosylation, the protein migrates to 50-60 kDa based on Tris-Bis PAGE result.
Endotoxin	Less than 1EU per μg by the LAL method.
Purity	> 95% as determined by Tris-Bis PAGE

Formulation and Storage

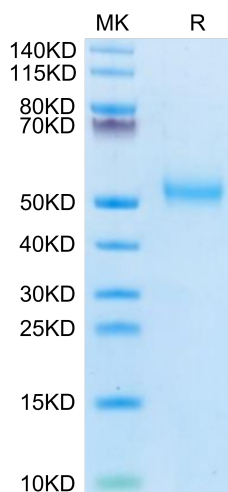
Formulation	Supplied as 0.22 μm filtered solution in PBS (pH 7.4). Please dilute to the desired concentration according to the concentration of the solution shown on the product label.
Storage	Valid for 12 months from date of receipt when stored at -80°C. Recommend to aliquot the protein into smaller quantities for optimal storage. Please do not repeated freeze-thaw cycles.

Background

Fc receptor-like 6 (FCRL6), the most recently characterized member of the FCRL family, is a cell surface glycoprotein with tyrosine-based regulatory potential. An extensive survey of human hematopoietic tissues disclosed that FCRL6 expression by NK- and T-cell subpopulations increases as a function of differentiation and is remarkably restricted to mature lymphocytes with cytotoxic capability.

Assay Data

Tris-Bis PAGE



Human FcRH6 on Tris-Bis PAGE under reduced condition. The purity is greater than 95%.