

Human FCRL2/IRTA4 Protein

Cat. No. FCR-HM1L2



Description

Source	Recombinant Human FCRL2/IRTA4 Protein is expressed from Expi293 with His tag at the C-terminal. It contains Leu20-Val401.
Accession	Q96LA5-1
Molecular Weight	The protein has a predicted MW of 42.7 kDa. Due to glycosylation, the protein migrates to 65-68 kDa based on Tris-Bis PAGE result.
Endotoxin	Less than 1EU per µg by the LAL method.
Purity	> 95% as determined by Tris-Bis PAGE > 95% as determined by HPLC

Formulation and Storage

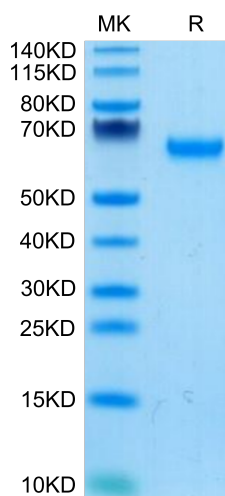
Formulation	Supplied as 0.22µm filtered solution in PBS (pH 7.4). Please dilute to the desired concentration according to the concentration of the solution shown on the product label.
Storage	Valid for 12 months from date of receipt when stored at -80°C. Recommend to aliquot the protein into smaller quantities for optimal storage. Please do not repeated freeze-thaw cycles.

Background

Fc receptor-like 2 (FCRL2) is highly expressed on B-cell chronic lymphocytic leukemia (B-CLL) cells and could possibly influence disease pathogenesis. FCRL2 mRNA expression was found to be expressed at considerably higher levels in peripheral blood mononuclear cells (PBMC) of B-CLL patients compared to controls (range 1.35- to 210-fold upregulation; $P < 0.0001$) and cells of other hematological diseases.

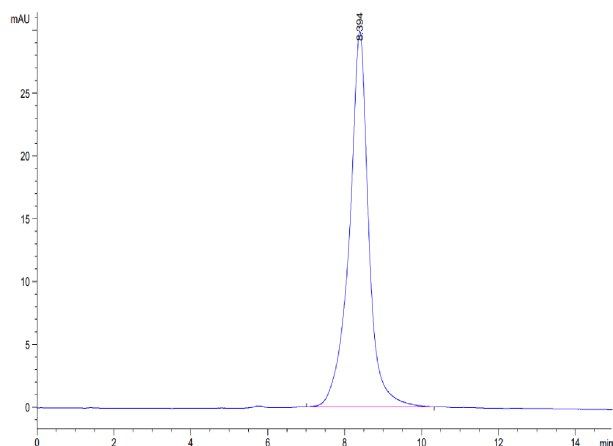
Assay Data

Tris-Bis PAGE



Human FCRL2 on Tris-Bis PAGE under reduced condition. The purity is greater than 95%.

SEC-HPLC



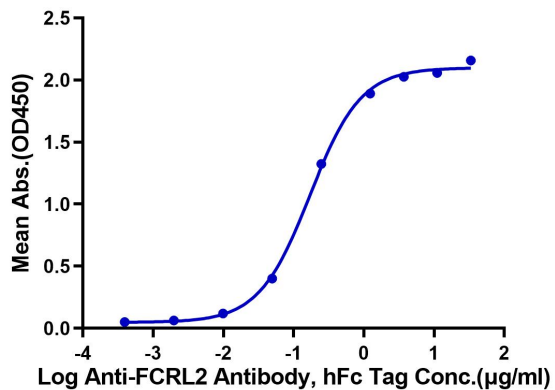
The purity of Human FCRL2 is greater than 95% as determined by SEC-HPLC.

ELISA Data

Assay Data

Human FCRL2, His Tag ELISA

0.1µg Human FCRL2, His Tag Per Well



Immobilized Human FCRL2, His Tag at 1µg/ml (100µl/well) on the plate. Dose response curve for Anti-FCRL2 Antibody, hFc Tag with the EC50 of 0.17µg/ml determined by ELISA.