

# Cynomolgus Fc epsilon RI alpha/FCER1a Protein

Cat. No. FER-CM101

## Description

<b>Source</b>	Recombinant Cynomolgus Fc epsilon RI alpha/FCER1a Protein is expressed from HEK293 with His tag at the C-terminus. It contains Val29-Lys204.
<b>Accession</b>	XP_005541370.2
<b>Molecular Weight</b>	The protein has a predicted MW of 22.02 kDa. Due to glycosylation, the protein migrates to 45-60 kDa based on Bis-Tris PAGE result.
<b>Endotoxin</b>	Less than 0.1 EU per µg by the LAL method.
<b>Purity</b>	> 95% as determined by Bis-Tris PAGE

## Formulation and Storage

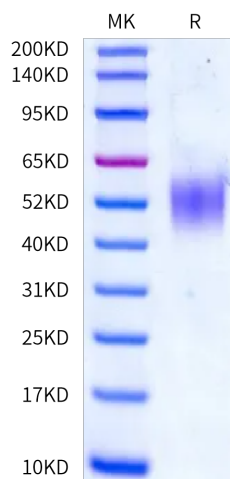
<b>Formulation</b>	Lyophilized from 0.22 µm filtered solution in PBS (pH 7.4). Normally 8% trehalose is added as protectant before lyophilization.
<b>Reconstitution</b>	Dissolve the lyophilized protein in distilled water. Please refer to the Certificate of Analysis for detailed instructions.
<b>Storage</b>	-20 to -80°C for 12 months as supplied from date of receipt. -80°C for 3 months after reconstitution. Recommend to aliquot the protein into smaller quantities for optimal storage. Please minimize freeze-thaw cycles.

## Background

Known susceptibility genes to atopy and asthma have been identified by linkage or associations with clinical phenotypes, including total serum IgE levels. IgE-mediated sensitivity reactions require a high-affinity IgE receptor (FcεRI), which immobilizes the immunoglobulin on the surface of the effector cells, mostly mast cells and basophils. Similarly to the previously investigated beta subunit of the receptor, FCER1A is a good candidate for a quantitative trait locus (QTL) in allergic diseases, and appears to participate in the systemic regulation of IgE levels.

## Assay Data

### Bis-Tris PAGE



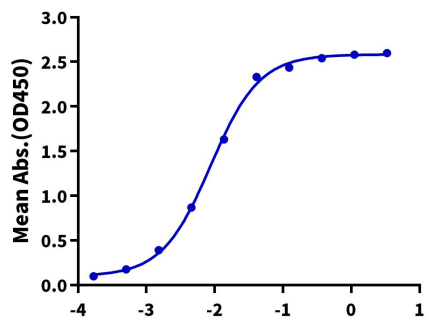
Cynomolgus Fc epsilon RI alpha on Bis-Tris PAGE under reduced condition. The purity is greater than 95%.

### ELISA Data

Assay Data

**Cynomolgus Fc epsilon RI alpha, His Tag ELISA**

0.1µg Cynomolgus Fc epsilon RI alpha, His Tag Per Well



Immobilized Cynomolgus Fc epsilon RI alpha, His Tag at 1µg/ml (100µl/well) on the plate. Dose response curve for Biotinylated Cynomolgus IgE, His Avi Tag (Cat. IGE-CM401B) with the EC50 of 8.8ng/ml determined by ELISA.

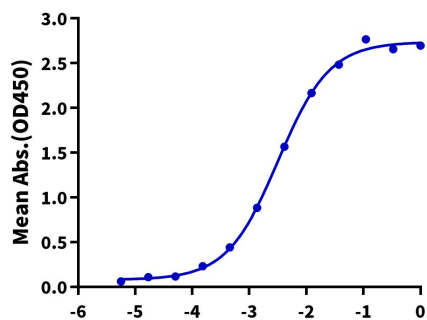
Log Biotinylated Cynomolgus IgE, His Avi Tag Conc.(µg/ml)

Assay Data

ELISA Data

**Cynomolgus Fc epsilon RI alpha, His Tag ELISA**

0.05µg Cynomolgus Fc epsilon RI alpha, His Tag Per Well



Immobilized Cynomolgus Fc epsilon RI alpha, His Tag at 0.5µg/ml (100µl/well) on the plate. Dose response curve for Anti-Fc epsilon RI alpha Antibody, hFc Tag with the EC50 of 3.2ng/ml determined by ELISA.

Log Anti-Fc epsilon RI alpha Antibody, hFc Tag Conc.(µg/ml)