

# Cynomolgus FGL1 Protein, Ultra Low Endotoxin

Cat. No. FGL-CM211-UL

Description	
Source	Recombinant Cynomolgus FGL1 Protein is expressed from HEK293 with hFc (IgG1) at the N-Terminus. It contains Leu23-Ile312.
Accession	G7N0K6-1
Molecular Weight	The protein has a predicted MW of 55.5 kDa. Due to glycosylation, the protein migrates to 62-68 kDa based on Bis-Tris PAGE result.
Endotoxin	Less than 0.01 EU per µg by the LAL method.
Purity	> 95% as determined by Bis-Tris PAGE > 95% as determined by HPLC

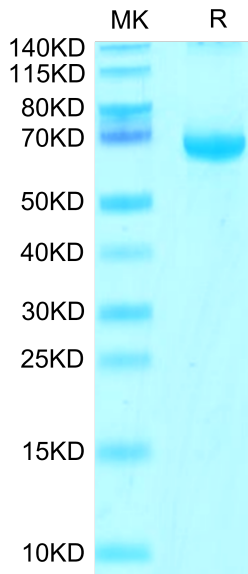
Formulation and Storage	
Formulation	Lyophilized from 0.22µm filtered solution in PBS (pH 7.4). Normally 8% trehalose is added as protectant before lyophilization.
Reconstitution	Dissolve the lyophilized protein in distilled water. Please refer to the Certificate of Analysis for detailed instructions.
Storage	-20 to -80°C for 12 months as supplied from date of receipt. -80°C for 3 months after reconstitution. Recommend to aliquot the protein into smaller quantities for optimal storage. Please minimize freeze-thaw cycles.

**Background**

Fibrinogen-like protein 1 (FGL-1) is a protein that is structurally related to fibrinogen. In humans, FLG-1 is encoded by the FGL1 gene. Fibrinogen-like protein 1 is a member of the fibrinogen family of proteins, which also includes fibrinogen, fibrinogen-like protein 2, and clotting factors V, VIII, and XIII. Fibrinogen-like Protein 1 is a major immune inhibitory ligand of LAG-3.

## Assay Data

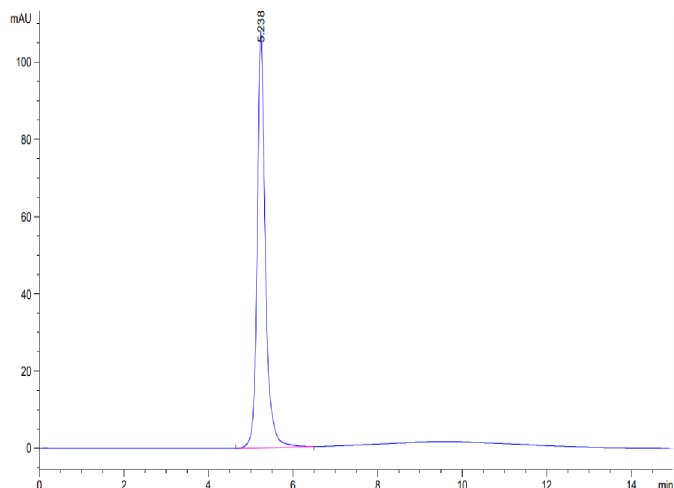
### Bis-Tris PAGE



Cynomolgus FGL1 on Bis-Tris PAGE under reduced condition. The purity is greater than 95%.

### SEC-HPLC

Assay Data

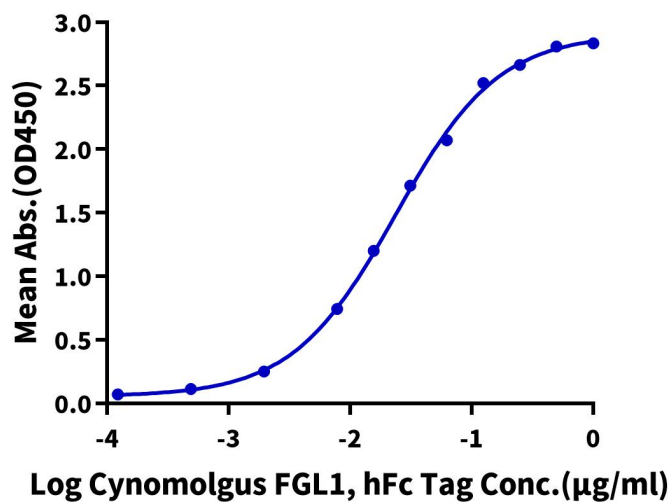


The purity of Cynomolgus FGL1 is greater than 95% as determined by SEC-HPLC.

ELISA Data

**Cynomolgus FGL1, hFc Tag ELISA**

0.5µg Human LAG3, His Tag Per Well



Immobilized Human LAG3, His Tag at 5µg/ml (100µl/well) on the plate. Dose response curve for Cynomolgus FGL1, hFc Tag with the EC50 of 23.6ng/ml determined by ELISA (QC Test).