

Cynomolgus FOLR2 Protein

Cat. No. FOL-CM1R2



Description

Source	Recombinant Cynomolgus FOLR2 Protein is expressed from HEK293 with His tag at the C-Terminus. It contains Gln9-His187.
Accession	A0A2K5U027-1
Molecular Weight	The protein has a predicted MW of 25.5 kDa. Due to glycosylation, the protein migrates to 30-45 kDa based on Bis-Tris PAGE result.
Endotoxin	Less than 1EU per µg by the LAL method.
Purity	> 95% as determined by Bis-Tris PAGE > 95% as determined by HPLC

Formulation and Storage

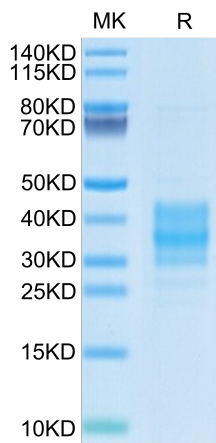
Formulation	Lyophilized from 0.22µm filtered solution in 50mM Tris, 100mM Glycine (pH 7.5). Normally 8% trehalose is added as protectant before lyophilization.
Reconstitution	Centrifuge the tube before opening. Reconstituting to a concentration more than 100 µg/ml is recommended. Dissolve the lyophilized protein in distilled water.
Storage	-20 to -80°C for 12 months as supplied from date of receipt. -80°C for 3 months after reconstitution. Recommend to aliquot the protein into smaller quantities for optimal storage. Please minimize freeze-thaw cycles.

Background

FOLR1 and FOLR2 are equipped with cellular glycosylphosphatidylinositol (GPI) anchors. FOLR1 is secreted from epithelia with or without a micelle-encapsulated GPI-anchor into milk and other body fluids/secretions, e.g. semen where its interaction with spermatozoa indicates a role in male fertility. FOLR1 and FOLR2 serve as serum biomarkers of various diseases. FOLR3 possesses no GPI-anchor and originates from secretory granules of neutrophil granulocytes; its concentration in serum correlates to the FOLR3 content in leukocytes and rises with increased leukocyte counts (infection, malignancy and pregnancy).

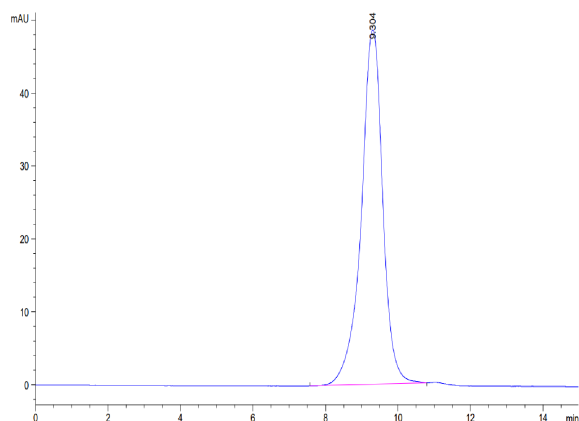
Assay Data

Bis-Tris PAGE



Cynomolgus FOLR2 on Bis-Tris PAGE under reduced condition. The purity is greater than 95%.

SEC-HPLC



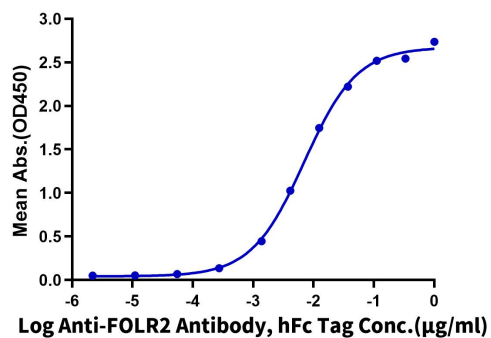
The purity of Cynomolgus FOLR2 is greater than 95% as determined by SEC-HPLC.

Assay Data

ELISA Data

Cynomolgus FOLR2, His Tag ELISA

0.05µg Cynomolgus FOLR2, His Tag Per Well



Immobilized Cynomolgus FOLR2, His Tag at 0.5µg/ml (100µl/well) on the plate. Dose response curve for Anti-FOLR2 Antibody, hFc Tag with the EC50 of 7.0ng/ml determined by ELISA.