

# Human FOLR2 Protein, Ultra Low Endotoxin

Cat. No. FOL-HM1R2-UL

## Description

|                         |  |
|-------------------------|--|
| <b>Source</b>           | Recombinant Human FOLR2 Protein is expressed from HEK293 with His tag at the C-Terminus.<br>It contains Thr17-Met228.              |
| <b>Accession</b>        | P14207   |
| <b>Molecular Weight</b> | The protein has a predicted MW of 25.5 kDa. Due to glycosylation, the protein migrates to 30-40 kDa based on Bis-Tris PAGE result. |
| <b>Endotoxin</b>        | Less than 0.01 EU per µg by the LAL method.  |
| <b>Purity</b>           | > 95% as determined by Bis-Tris PAGE<br>> 95% as determined by HPLC  |

## Formulation and Storage

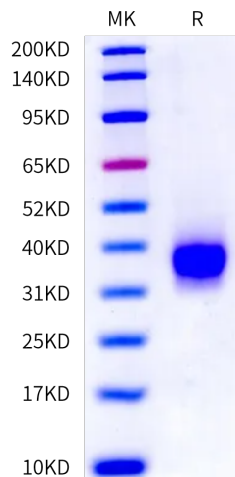
|                       |   |
|-----------------------|---|
| <b>Formulation</b>    | Lyophilized from 0.22µm filtered solution in PBS (pH 7.4). Normally 8% trehalose is added as protectant before lyophilization.  |
| <b>Reconstitution</b> | Dissolve the lyophilized protein in distilled water. Please refer to the Certificate of Analysis for detailed instructions.   |
| <b>Storage</b>        | -20 to -80°C for 24 months as supplied from date of receipt. -80°C for 3 months after reconstitution. Recommend to aliquot the protein into smaller quantities for optimal storage. Please minimize freeze-thaw cycles. |

## Background

FOLR1 and FOLR2 are equipped with cellular glycosylphosphatidylinositol (GPI) anchors. FOLR1 is secreted from epithelia with or without a micelle-encapsulated GPI-anchor into milk and other body fluids/secretions, e.g. semen where its interaction with spermatozoa indicates a role in male fertility. FOLR1 and FOLR2 serve as serum biomarkers of various diseases. FOLR3 possesses no GPI-anchor and originates from secretory granules of neutrophil granulocytes; its concentration in serum correlates to the FOLR3 content in leukocytes and rises with increased leukocyte counts (infection, malignancy and pregnancy).

## Assay Data

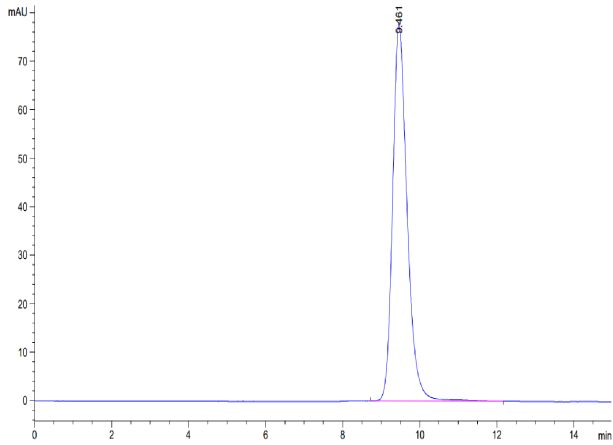
### Bis-Tris PAGE



Human FOLR2 on Bis-Tris PAGE under reduced condition. The purity is greater than 95%.

### SEC-HPLC

Assay Data



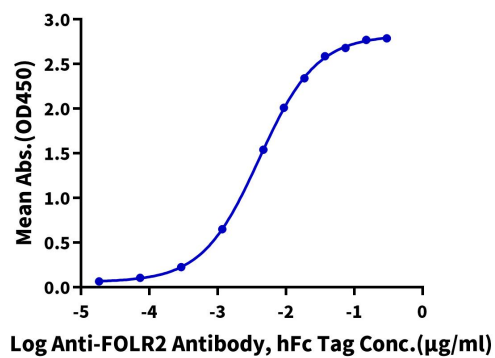
The purity of Human FOLR2 is greater than 95% as determined by SEC-HPLC.

Assay Data

ELISA Data

**Human FOLR2, His Tag ELISA**

0.05µg Human FOLR2, His Tag Per Well



Immobilized Human FOLR2, His Tag at 0.5µg/ml (100µl/well) on the plate. Dose response curve for Anti-FOLR2 Antibody, hFc Tag with the EC50 of 4.1ng/ml determined by ELISA (QC Test).