

Human FOLR1 Protein

Cat. No. FOL-HM4R1

Description

Source	Recombinant Human FOLR1 Protein is expressed from Expi293 with His tag and Avi tag at the C-terminal. It contains Arg25-Met233.
Accession	P15328
Molecular Weight	The protein has a predicted MW of 27.5 kDa. Due to glycosylation, the protein migrates to 38-45 kDa based on Tris-Bis PAGE result.
Endotoxin	Less than 1EU per μg by the LAL method.
Purity	> 95% as determined by Tris-Bis PAGE > 95% as determined by HPLC

Formulation and Storage

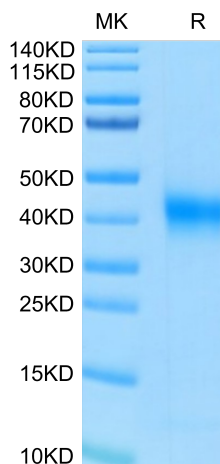
Formulation	Lyophilized from 0.22 μm filtered solution in PBS (pH 7.4). Normally 5% trehalose is added as protectant before lyophilization.
Reconstitution	Centrifuge tubes before opening. Reconstituting to a concentration more than 100 $\mu\text{g}/\text{ml}$ is recommended. Dissolve the lyophilized protein in distilled water.
Storage	-20 to -80°C for 12 months as supplied from date of receipt. -20 to -80°C for 3-6 months in unopened state after reconstitution. 2-8°C for 2-7 days after reconstitution. Recommend to aliquot the protein into smaller quantities for optimal storage. Please avoid freeze-thaw cycles.

Background

Folate Receptor 1 (FOLR1), also known as Folate Receptor alpha and Folate Binding Protein (FBP), is a 37 - 42 kDa protein that mediates the cellular uptake of folic acid and reduced folates. Dietary folates are required for many key metabolic processes including nucleotide and methionine synthesis, the interconversion of glycine and serine, and histidine breakdown. FOLR1 binds to folate and reduced folic acid derivatives and mediates delivery of 5-methyltetrahydrofolate and folate analogs into the interior of cells. Has high affinity for folate and folic acid analogs at neutral pH.

Assay Data

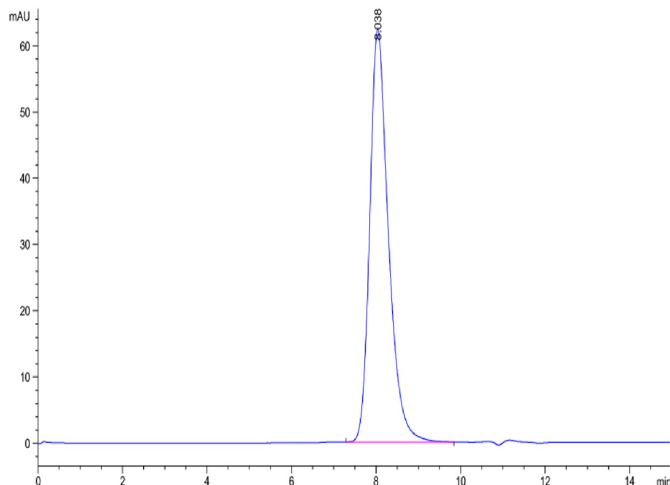
Tris-Bis PAGE



Human FOLR1 on Tris-Bis PAGE under reduced condition. The purity is greater than 95%.

SEC-HPLC

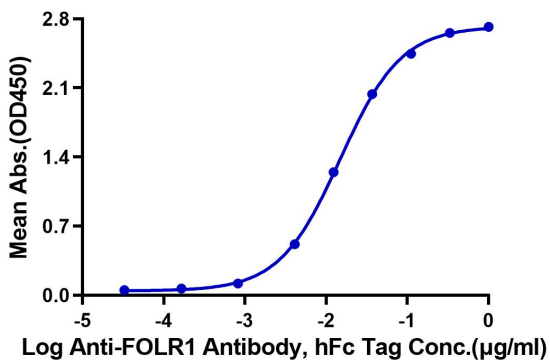
Assay Data



The purity of Human FOLR1 is greater than 95% as determined by SEC-HPLC.

ELISA Data

Human FOLR1, His Tag ELISA
0.05µg Human FOLR1, His Tag Per Well



Immobilized Human FOLR1, His Tag at 0.5µg/ml (100µl/Well) on plate. Dose response curve for Anti-FOLR1 Antibody, hFc Tag with the EC50 of 15ng/ml determined by ELISA.