

Mouse FOLR4/Juno Protein

Cat. No. FOL-MM1R4

Description

Source	Recombinant Mouse FOLR4/Juno Protein is expressed from HEK293 with His tag at the C-Terminus. It contains Gly20-Gly222.
Accession	Q9EQF4-1
Molecular Weight	The protein has a predicted MW of 24.7 kDa. Due to glycosylation, the protein migrates to 35-40 kDa based on Tris-Bis PAGE result.
Endotoxin	Less than 1EU per µg by the LAL method.
Purity	> 95% as determined by Tris-Bis PAGE > 95% as determined by HPLC

Formulation and Storage

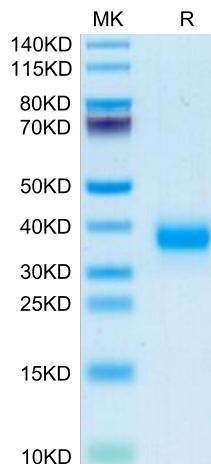
Formulation	Lyophilized from 0.22µm filtered solution in PBS (pH 7.4). Normally 8% trehalose is added as protectant before lyophilization.
Reconstitution	Centrifuge the tube before opening. Reconstituting to a concentration more than 100 µg/ml is recommended. Dissolve the lyophilized protein in distilled water.
Storage	-20 to -80°C for 12 months as supplied from date of receipt. -20 to -80°C for 3-6 months in unopened state after reconstitution. 2-8°C for 2-7 days after reconstitution. Recommend to aliquot the protein into smaller quantities for optimal storage. Please minimize freeze-thaw cycles.

Background

Izumo1 is the only essential sperm-egg fusion protein currently known on mammalian sperm, and its egg receptor (Juno; formerly Folr4) was recently discovered. Male knockout mice for Izumo1 and female knockout mice for Juno are both healthy but sterile. Here, both sperm-egg binding proteins are shown to be evolving under positive selection. Juno's presence in mammals alone, suggesting a recent mammalian-specific duplication and neofunctionalization of the ancestral folate receptor.

Assay Data

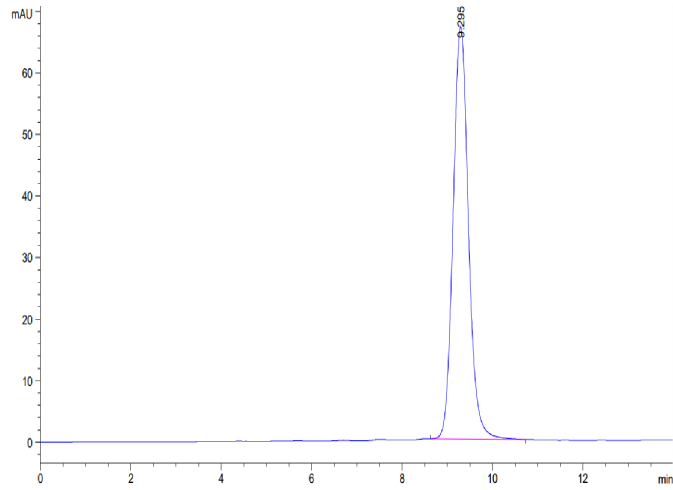
Tris-Bis PAGE



Mouse FOLR4/Juno on Tris-Bis PAGE under reduced condition. The purity is greater than 95%.

SEC-HPLC

Assay Data



The purity of Mouse FOLR4/Juno is greater than 95% as determined by SEC-HPLC.