

# Human FSH alpha&beta Protein

Cat. No. FSH-HM4AB

## Description

|                         |  |
|-------------------------|--|
| <b>Source</b>           | Recombinant Human FSH alpha&beta Protein is expressed from HEK293 with His tag at the C-terminus.<br>It contains Ala25-Ser116 (FSH alpha) and Asn19-Glu129 (FSH beta).   |
| <b>Accession</b>        | P01215(FSH alpha)&P01225(FSH beta)   |
| <b>Molecular Weight</b> | The protein has a predicted MW of 10.20 kDa (FSH alpha) and 13.58 kDa (FSH beta). Due to glycosylation, the protein migrates to 25-30 kDa based on Bis-Tris PAGE result. |
| <b>Endotoxin</b>        | Less than 1EU per µg by the LAL method.  |
| <b>Purity</b>           | > 95% as determined by Bis-Tris PAGE<br>> 95% as determined by HPLC  |

## Formulation and Storage

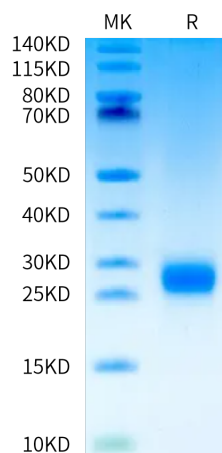
|                       |   |
|-----------------------|---|
| <b>Formulation</b>    | Lyophilized from 0.22 µm filtered solution in PBS (pH 7.4). Normally 8% trehalose is added as protectant before lyophilization.   |
| <b>Reconstitution</b> | Centrifuge the tube before opening. Reconstituting to a concentration more than 100 µg/ml is recommended. Dissolve the lyophilized protein in distilled water.  |
| <b>Storage</b>        | -20 to -80°C for 12 months as supplied from date of receipt. -80°C for 3 months after reconstitution. Recommend to aliquot the protein into smaller quantities for optimal storage. Please minimize freeze-thaw cycles. |

## Background

FSH (Follicle-stimulating hormone) is a gonadotropin, a glycoprotein polypeptide hormone. It has a functionally indispensable 96 amino acid  $\alpha$  subunit that is common to LH, TSH and hCG, in addition to a structurally unique  $\beta$  subunit. FSH is synthesized and secreted by the gonadotropic cells of the anterior pituitary gland and regulates the development, growth, pubertal maturation, and reproductive processes of the body.

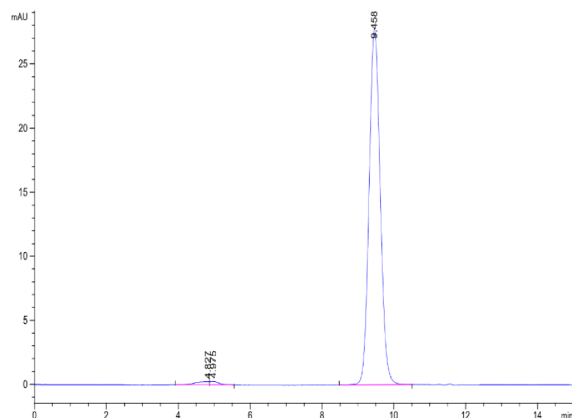
## Assay Data

### Bis-Tris PAGE



Human FSH alpha&beta on Bis-Tris PAGE under reduced condition. The purity is greater than 95%.

### SEC-HPLC



The purity of Human FSH alpha&beta is greater than 95% as determined by SEC-HPLC.