

Human FSTL1 Protein

Cat. No. FST-HM1L1



Description

Source	Recombinant Human FSTL1 Protein is expressed from HEK293 with His tag at the C-Terminus. It contains Glu21-Ile308.
Accession	Q12841-1
Molecular Weight	The protein has a predicted MW of 33.77 kDa. Due to glycosylation, the protein migrates to 48-58 kDa based on Bis-Tris PAGE result.
Endotoxin	Less than 1EU per µg by the LAL method.
Purity	> 95% as determined by Bis-Tris PAGE > 95% as determined by HPLC

Formulation and Storage

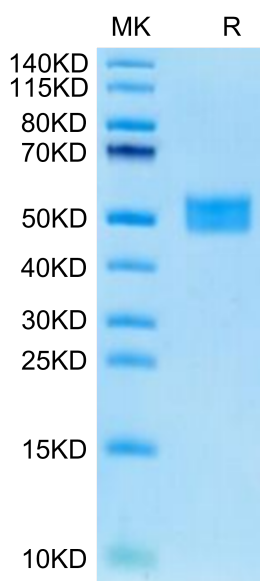
Formulation	Supplied as 0.22µm filtered solution in PBS (pH 7.4).
Storage	Valid for 12 months from date of receipt when stored at -80°C. Recommend to aliquot the protein into smaller quantities for optimal storage. Please minimize freeze-thaw cycles.

Background

Follistatin-like 1 (FSTL1), a secreted glycoprotein, has been shown to participate in regulating developmental processes and to be involved in states of disease and injury. Recent findings on FSTL1 in both acute coronary syndrome and heart failure emphasize its potential as a target for cardiac regenerative therapy.

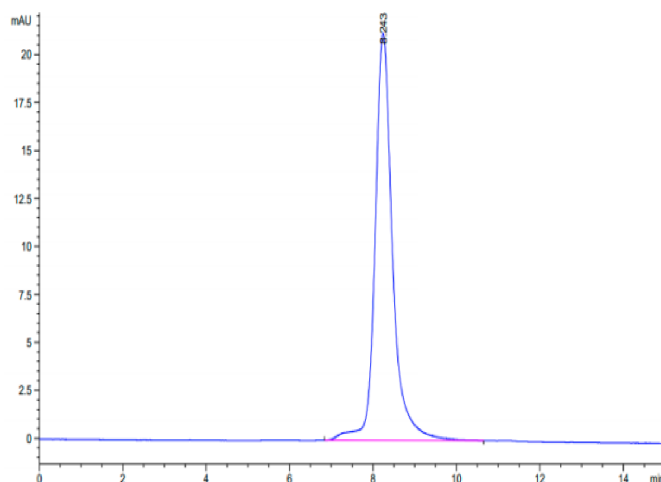
Assay Data

Bis-Tris PAGE



Human FSTL1 on Bis-Tris PAGE under reduced condition. The purity is greater than 95%.

SEC-HPLC



The purity of Human FSTL1 is greater than 95% as determined by SEC-HPLC.