

Human FSTL3 Protein

Cat. No. FTS-HM1L3

Description

Source	Recombinant Human FSTL3 Protein is expressed from HEK293 with His tag at the C-Terminus. It contains Met27-Val263.
Accession	O95633-1
Molecular Weight	The protein has a predicted MW of 26.1 kDa. Due to glycosylation, the protein migrates to 35-40 kDa based on Bis-Tris PAGE result.
Endotoxin	Less than 1EU per μg by the LAL method.
Purity	> 95% as determined by Bis-Tris PAGE

Formulation and Storage

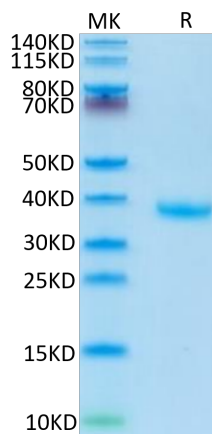
Formulation	Lyophilized from 0.22 μm filtered solution in PBS (pH 7.4). Normally 8% trehalose is added as protectant before lyophilization.
Reconstitution	Centrifuge the tube before opening. Reconstituting to a concentration more than 100 $\mu\text{g}/\text{ml}$ is recommended. Dissolve the lyophilized protein in distilled water.
Storage	-20 to -80°C for 12 months as supplied from date of receipt. -80°C for 3 months after reconstitution. Recommend to aliquot the protein into smaller quantities for optimal storage. Please minimize freeze-thaw cycles.

Background

Follistatin-like 3 (FSTL3) is a novel cytokine that regulates insulin sensitivity and counteracts activin/myostatin signalling. In the present study, regulation of FSTL3 in renal dysfunction was investigated in both human chronic kidney disease (CKD) and acute kidney dysfunction (AKD). Furthermore, mFSTL3 expression was analysed in insulin-sensitive tissues in a mouse model of CKD.

Assay Data

Bis-Tris PAGE

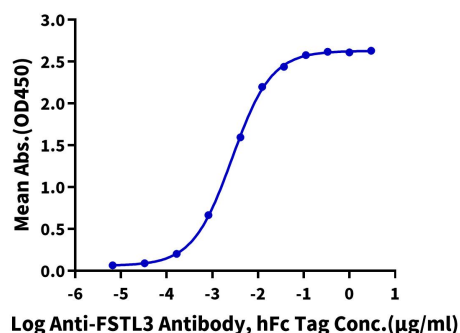


Human FSTL3 on Bis-Tris PAGE under reduced condition. The purity is greater than 95%.

ELISA Data

Human FSTL3, His Tag ELISA

0.05 μg Human FSTL3, His Tag Per Well



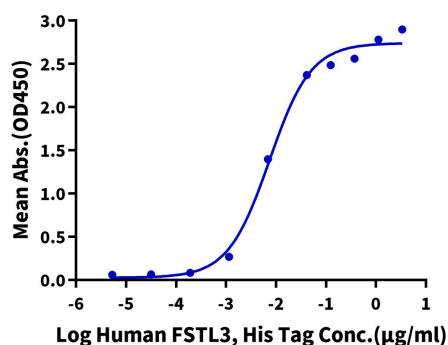
Immobilized Human FSTL3, His Tag at 0.5 $\mu\text{g}/\text{ml}$ (100 $\mu\text{l}/\text{Well}$) on the plate. Dose response curve for Anti-FSTL3 Antibody, hFc Tag with the EC₅₀ of 2.7ng/ml determined by ELISA (QC Test).

Assay Data

ELISA Data

Human FSTL3, His Tag ELISA

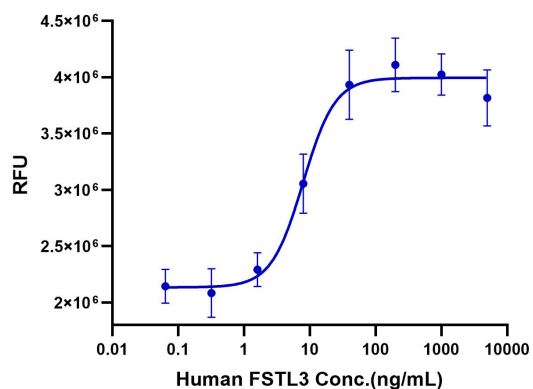
0.05µg Human Activin A, No Tag Per Well



Immobilized Human Activin A, No Tag at 0.5µg/ml (100µl/well) on the plate. Dose response curve for Human FSTL3, His Tag with the EC50 of 7.6ng/ml determined by ELISA.

Cell Based Assay

Recombinant Human FSTL3 Protein Bioactivity



Measured by its ability to neutralize Activin-mediated inhibition on MPC11 cell proliferation. The ED50 for this effect is typically 5-25 ng/mL in the presence of 7.5 ng/mL rhActivin A.