

Cynomolgus Coagulation factor XI Protein, Ultra Low Endotoxin



Cat. No. FXI-CM101-UL

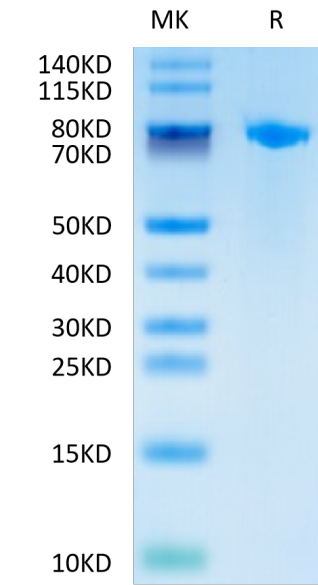
Description	
Source	Recombinant Cynomolgus Coagulation factor XI Protein is expressed from HEK293 with His tag at the C-Terminus. It contains Glu44-Ala650.
Accession	XP_005556540.2
Molecular Weight	The protein has a predicted MW of 69.05 kDa. Due to glycosylation, the protein migrates to 70-85 kDa based on Bis-Tris PAGE result.
Endotoxin	Less than 0.01 EU per µg by the LAL method.
Purity	> 95% as determined by Bis-Tris PAGE > 95% as determined by HPLC

Formulation and Storage	
Formulation	Lyophilized from 0.22 µm filtered solution in PBS (pH 7.4). Normally 8% trehalose is added as protectant before lyophilization.
Reconstitution	Dissolve the lyophilized protein in distilled water. Please refer to the Certificate of Analysis for detailed instructions.
Storage	-20 to -80°C for 12 months as supplied from date of receipt. -80°C for 3 months after reconstitution. Recommend to aliquot the protein into smaller quantities for optimal storage. Please minimize freeze-thaw cycles.

Background	
Factor XI (FXI) is the zymogen of a plasma protease (FXIa) that contributes to hemostasis by activating factor IX (FIX). In the original cascade model of coagulation, FXI is converted to FXIa by factor XIIa (FXIIa), a component, along with prekallikrein and high-molecular-weight kininogen (HK), of the plasma kallikrein-kinin system (KKS).	

Assay Data

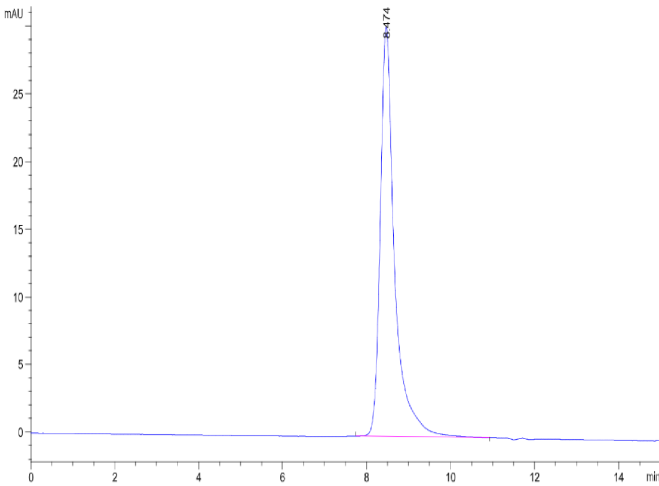
Bis-Tris PAGE



Cynomolgus Coagulation factor XI on Bis-Tris PAGE under reduced condition. The purity is greater than 95%.

SEC-HPLC

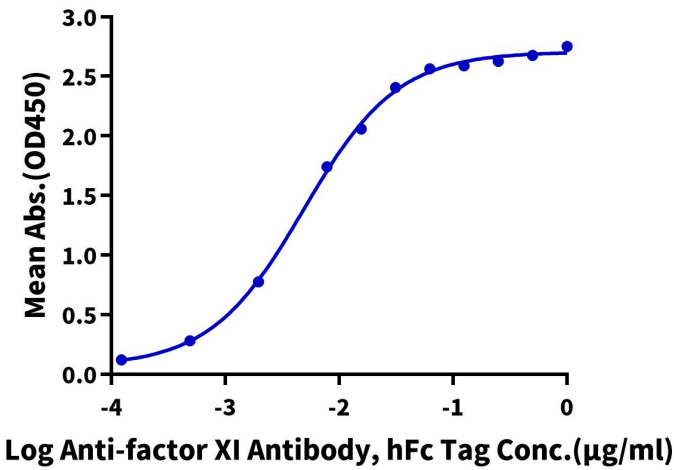
Assay Data



The purity of Cynomolgus Coagulation factor XI Protein is greater than 95% as determined by SEC-HPLC.

ELISA Data

Cynomolgus Coagulation factor XI, His Tag ELISA
0.05µg Cynomolgus Coagulation factor XI, His Tag Per Well



Immobilized Cynomolgus Coagulation factor XI, His Tag at 0.5µg/ml (100µl/well) on the plate. Dose response curve for Anti-Factor XI Antibody, hFc Tag with the EC50 of 4.9ng/ml determined by ELISA (QC Test).