

Human Galectin 1 Protein

Cat. No. GAL-HM201

Description

Source	Recombinant Human Galectin 1 Protein is expressed from HEK293 with hFc tag at the N-Terminus. It contains Ala2-Asp135.
Accession	P09382
Molecular Weight	The protein has a predicted MW of 41.9 kDa. Due to glycosylation, the protein migrates to 48-55 kDa based on Tris-Bis PAGE result.
Endotoxin	Less than 1EU per µg by the LAL method.
Purity	> 95% as determined by Tris-Bis PAGE > 95% as determined by HPLC

Formulation and Storage

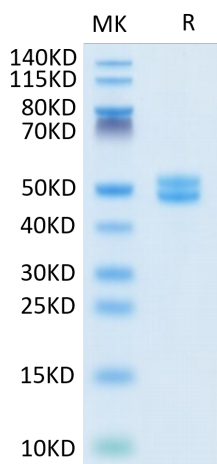
Formulation	Lyophilized from 0.22µm filtered solution in PBS (pH 7.4). Normally 8% trehalose is added as protectant before lyophilization.
Reconstitution	Centrifuge the tube before opening. Reconstituting to a concentration more than 100 µg/ml is recommended. Dissolve the lyophilized protein in distilled water.
Storage	-20 to -80°C for 12 months as supplied from date of receipt. -80°C for 3-6 months after reconstitution. 2-8°C for 2-7 days after reconstitution. Recommend to aliquot the protein into smaller quantities for optimal storage. Please minimize freeze-thaw cycles.

Background

Galectin 1 (Gal-1), a β -galactoside binding mammalian lectin of 14KDa, is implicated in many signalling pathways, immune responses associated with cancer progression and immune disorders. Inhibition of human Gal-1 has been regarded as one of the potential therapeutic approaches for the treatment of cancer, as it plays a major role in tumour development and metastasis by modulating various biological functions viz. apoptosis, angiogenesis, migration, cell immune escape.

Assay Data

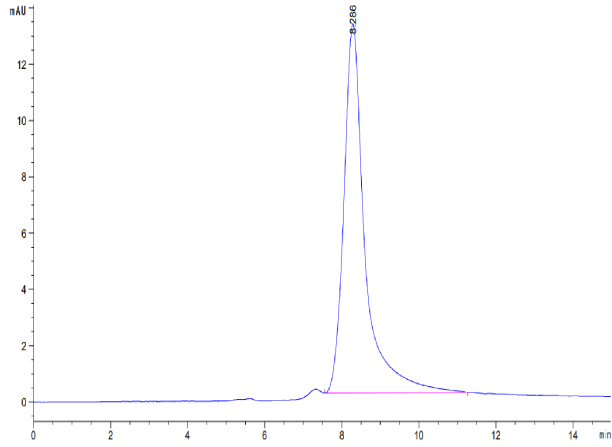
Tris-Bis PAGE



Human Galectin 1 on Tris-Bis PAGE under reduced condition. The purity is greater than 95%.

SEC-HPLC

Assay Data



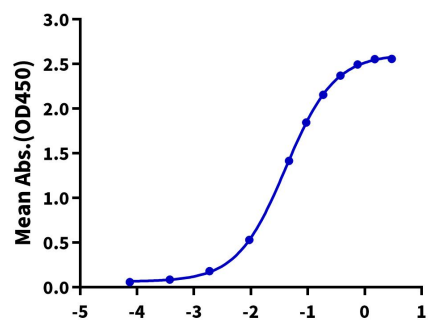
The purity of Human Galectin 1 is greater than 95% as determined by SEC-HPLC.

Assay Data

ELISA Data

Human Galectin 1, hFc Tag ELISA

0.1µg Human Galectin 1, hFc Tag Per Well



Immobilized Human Galectin 1, hFc Tag at 1µg/ml (100µl/Well) on the plate. Dose response curve for Biotinylated Anti-Galectin 1 Antibody, hFc Tag with the EC50 of 41.1ng/ml determined by ELISA.

Log Biotinylated Anti-Galectin 1 Antibody, hFc Tag Conc.(µg/ml)