

# Cynomolgus GAS6 Protein

Cat. No. GAS-CM106



## Description

<b>Source</b>	Recombinant Cynomolgus GAS6 Protein is expressed from HEK293 with His tag at the C-Terminus. It contains Ala31-Ala637.
<b>Accession</b>	A0A2K5VGX7
<b>Molecular Weight</b>	The protein has a predicted MW of 68.55 kDa. Due to glycosylation, the protein migrates to 69-74 kDa based on Tris-Bis PAGE result.
<b>Endotoxin</b>	Less than 1EU per µg by the LAL method.
<b>Purity</b>	> 95% as determined by Tris-Bis PAGE > 95% as determined by HPLC

## Formulation and Storage

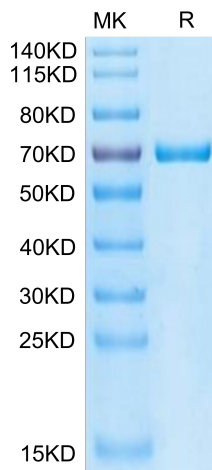
<b>Formulation</b>	Lyophilized from 0.22µm filtered solution in PBS (pH 7.4). Normally 8% trehalose is added as protectant before lyophilization.
<b>Reconstitution</b>	Centrifuge the tube before opening. Reconstituting to a concentration more than 100 µg/ml is recommended. Dissolve the lyophilized protein in distilled water.
<b>Storage</b>	-20 to -80°C for 12 months as supplied from date of receipt. -20 to -80°C for 3-6 months in unopened state after reconstitution. 2-8°C for 2-7 days after reconstitution. Recommend to aliquot the protein into smaller quantities for optimal storage. Please minimize freeze-thaw cycles.

## Background

Growth arrest-specific 6, also known as Gas6, is a human gene encoding the Gas6 protein, which was originally found to be upregulated in growth-arrested fibroblasts. Gas6 is a member of the vitamin K-dependent family of proteins expressed in many human tissues and regulates several biological processes in cells, including proliferation, survival and migration, by binding to its receptors Tyro3, Axl and Mer (TAM).

## Assay Data

### Tris-Bis PAGE



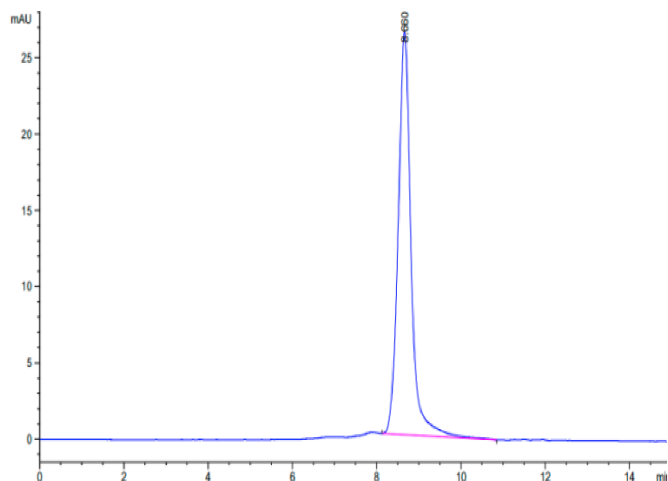
Cynomolgus GAS6 on Tris-Bis PAGE under reduced condition. The purity is greater than 95%.

### SEC-HPLC

# Cynomolgus GAS6 Protein

Cat. No. GAS-CM106

## Assay Data

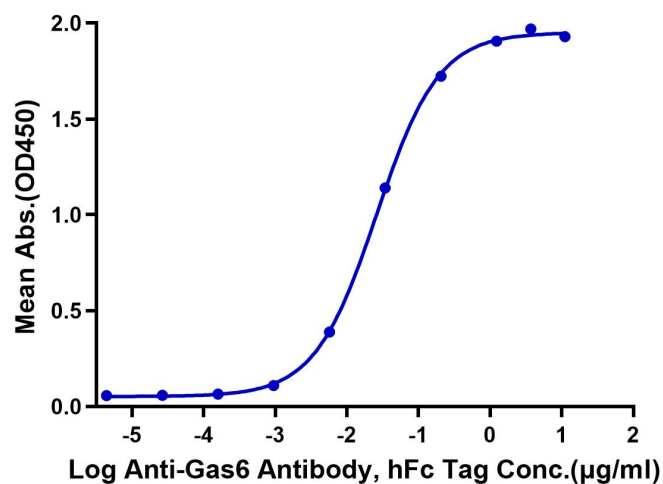


The purity of Cynomolgus GAS6 is greater than 95% as determined by SEC-HPLC.

## ELISA Data

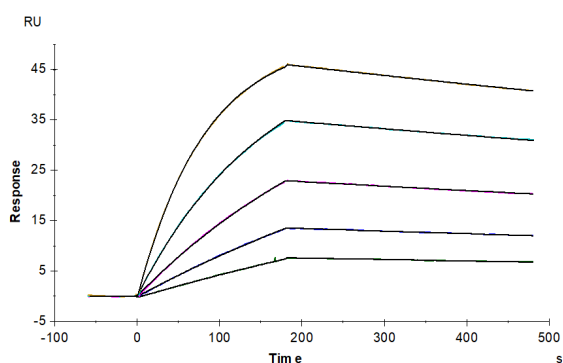
### Cynomolgus GAS6, His Tag ELISA

0.2 $\mu$ g Cynomolgus GAS6, His Tag Per Well



Immobilized Cynomolgus GAS6, His Tag at 2 $\mu$ g/ml (100 $\mu$ l/well) on the plate. Dose response curve for Anti-Gas6 Antibody, hFc Tag with the EC50 of 26.1ng/ml determined by ELISA (QC Test).

## SPR Data



Cynomolgus Ax1, His Tag immobilized on CM5 Chip can bind Cynomolgus GAS6, His Tag with an affinity constant of 1.70 nM as determined in SPR assay (Biacore T200).