

Human GAS6 Protein, Ultra Low Endotoxin

Cat. No. GAS-HM116-UL



Description

Source	Recombinant Human GAS6 Protein is expressed from HEK293 with His tag at the C-Terminus.
	It contains Ala49-Ala678.
Accession	Q14393-2
Molecular Weight	The protein has a predicted MW of 70.60 kDa. Due to glycosylation, the protein migrates to 71-75 kDa based on Bis-Tris PAGE result.
Endotoxin	Less than 0.001 EU per µg by the LAL method.
Purity	> 95% as determined by Bis-Tris PAGE
	> 90% as determined by HPLC

Formulation and Storage

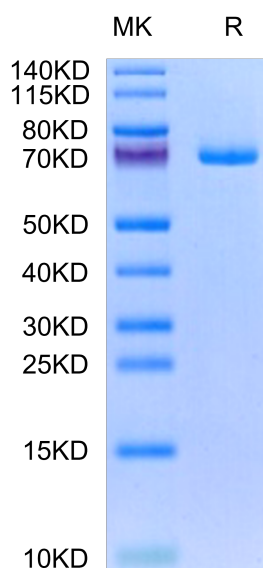
Formulation	Lyophilized from 0.22 µm filtered solution in 20 mM Tris, 500 mM NaCl (pH 8.5). Normally 8% mannitol is added as protectant before lyophilization.
Reconstitution	Dissolve the lyophilized protein in distilled water. Please refer to the Certificate of Analysis for detailed instructions.
Storage	-20 to -80°C for 12 months as supplied from date of receipt. -80°C for 3 months after reconstitution. Recommend to aliquot the protein into smaller quantities for optimal storage. Please minimize freeze-thaw cycles.

Background

Growth arrest-specific 6, also known as Gas6, is a human gene encoding the Gas6 protein, which was originally found to be upregulated in growth-arrested fibroblasts. Gas6 is a member of the vitamin K-dependent family of proteins expressed in many human tissues and regulates several biological processes in cells, including proliferation, survival and migration, by binding to its receptors Tyro3, Axl and Mer (TAM).

Assay Data

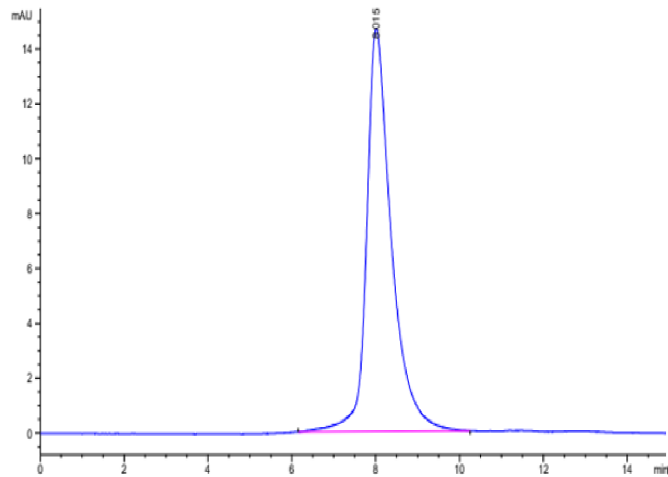
Bis-Tris PAGE



Human GAS6 on Bis-Tris PAGE under reduced condition. The purity is greater than 95%.

SEC-HPLC

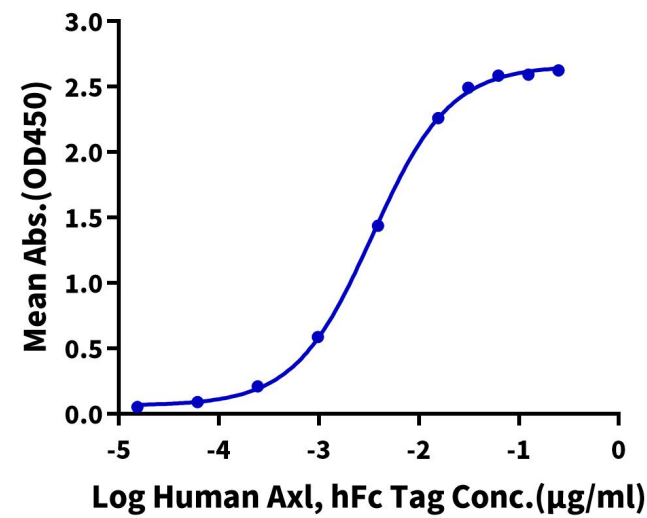
Assay Data



The purity of Human GAS6 is greater than 90% as determined by SEC-HPLC.

ELISA Data

Human GAS6, His Tag ELISA
0.5µg Human GAS6, His Tag Per Well



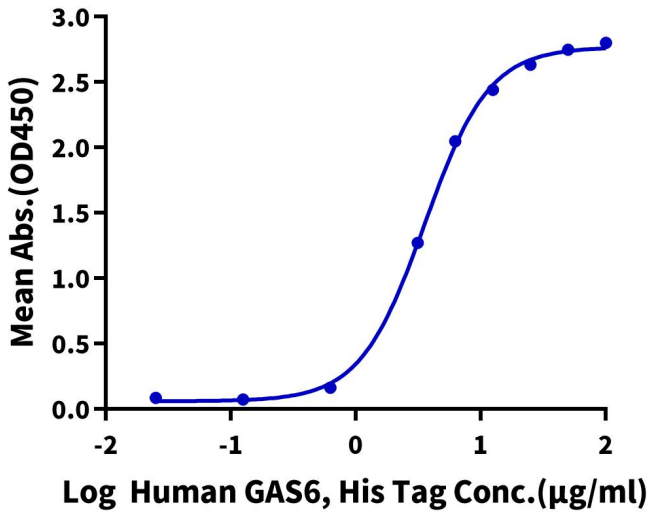
Immobilized Human GAS6, His Tag at 5 µg/ml (100 µl/well) on the plate. Dose response curve for Human Axl, hFc Tag with the EC50 of 3.4 ng/ml determined by ELISA (QC Test).

ELISA Data

Assay Data

Human GAS6, His Tag ELISA

0.5µg Human MERTK, mFc Tag Per Well

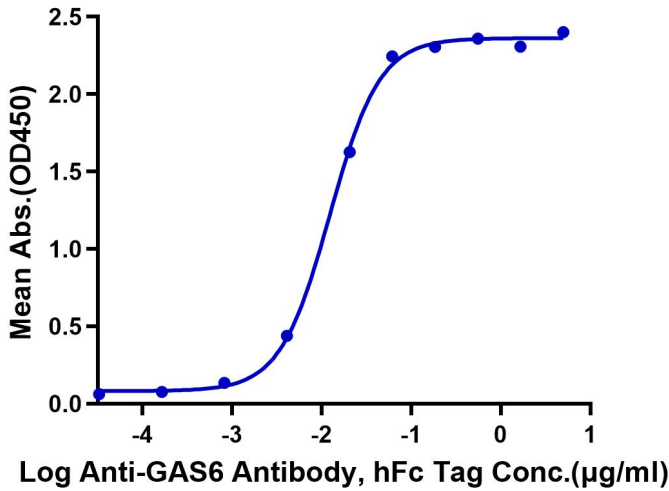


Immobilized Human MERTK, mFc Tag at 5µg/ml(100µl/well) on the plate. Dose response curve for Human GAS6, His Tag with the EC50 of 3.55µg/ml determined by ELISA.

ELISA Data

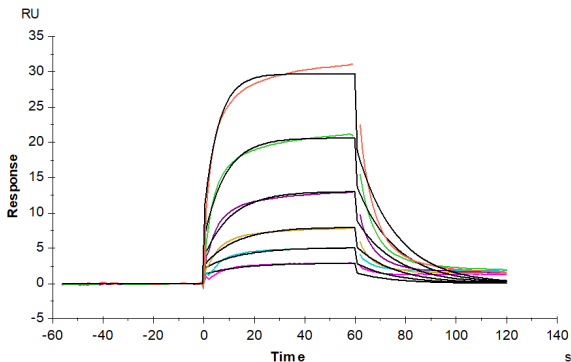
Human GAS6, His Tag ELISA

0.5µg Human GAS6, His Tag Per Well



Immobilized Human GAS6, His Tag at 5 µg/ml (100 µl/well) on the plate. Dose response curve for Anti-GAS6 Antibody, hFc Tag with the EC50 of 12.3 ng/ml determined by ELISA.

SPR Data



Human GAS6, His Tag immobilized on CM5 Chip can bind Human TYRO3, His Tag with an affinity constant of 2.36 µM as determined in SPR assay (Biacore T200).