

Mouse GAS6 Protein

Cat. No. GAS-MM106



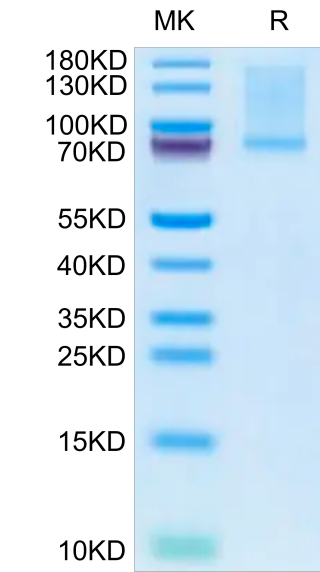
Description	
Source	Recombinant Mouse GAS6 Protein is expressed from HEK293 with His tag at the C-Terminus. It contains Val28-Pro674.
Accession	Q61592
Molecular Weight	The protein has a predicted MW of 73.09 kDa. Due to glycosylation, the protein migrates to 74-90 kDa based on Bis-Tris PAGE result.
Endotoxin	Less than 1 EU per µg by the LAL method.
Purity	> 95% as determined by Bis-Tris PAGE > 95% as determined by HPLC

Formulation and Storage	
Formulation	Lyophilized from 0.22µm filtered solution in PBS (pH 7.4). Normally 8% trehalose is added as protectant before lyophilization.
Reconstitution	Dissolve the lyophilized protein in distilled water. Please refer to the Certificate of Analysis for detailed instructions.
Storage	-20 to -80°C for 12 months as supplied from date of receipt. -80°C for 3 months after reconstitution. Recommend to aliquot the protein into smaller quantities for optimal storage. Please minimize freeze-thaw cycles.

Background	
Growth arrest-specific 6, also known as Gas6, is a human gene encoding the Gas6 protein, which was originally found to be upregulated in growth-arrested fibroblasts. Gas6 is a member of the vitamin K-dependent family of proteins expressed in many human tissues and regulates several biological processes in cells, including proliferation, survival and migration, by binding to its receptors Tyro3, Axl and Mer (TAM).	

Assay Data

Bis-Tris PAGE



Mouse GAS6 on Bis-Tris PAGE under reduced condition. The purity is greater than 95%.

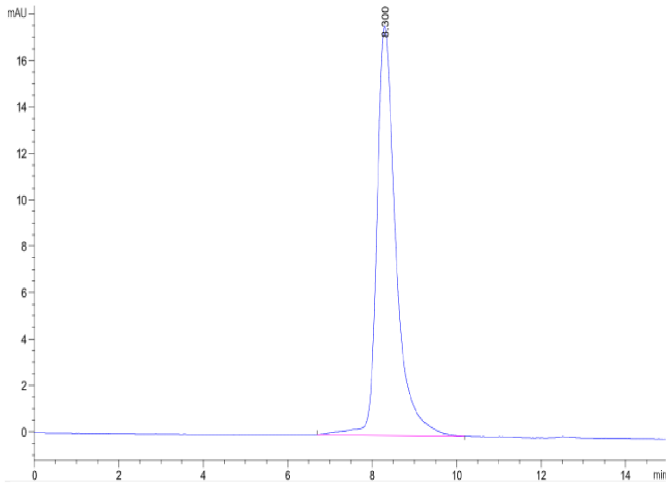
SEC-HPLC

Mouse GAS6 Protein

Cat. No. GAS-MM106



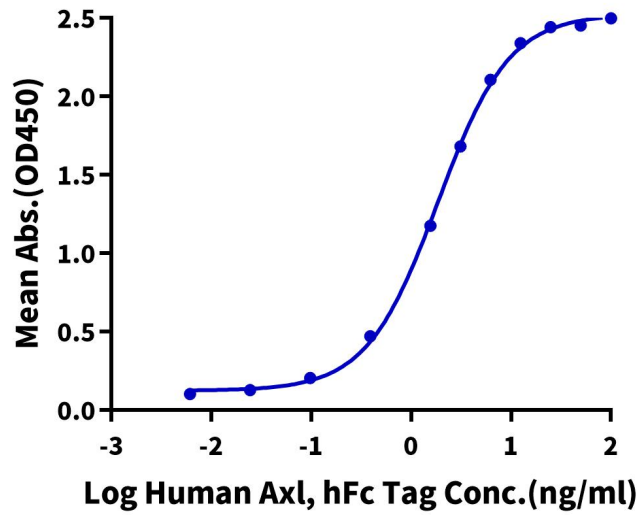
Assay Data



The purity of Mouse GAS6 is greater than 95% as determined by SEC-HPLC.

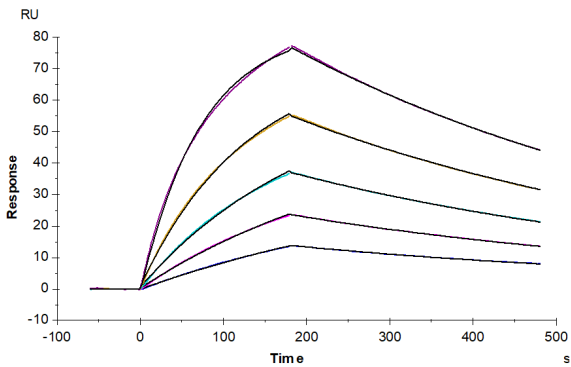
ELISA Data

**Mouse GAS6, His Tag ELISA**  
0.5µg Mouse GAS6, His Tag Per Well



Immobilized Mouse GAS6, His Tag at 5µg/ml (100µl/well) on the plate. Dose response curve for Human AXL, hFc Tag with the EC50 of 1.9ng/ml determined by ELISA (QC Test).

SPR Data



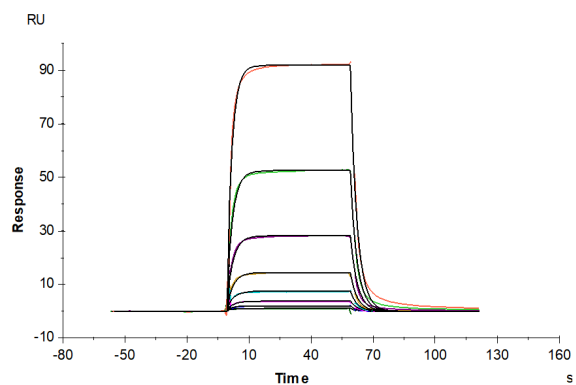
Mouse AXL, His Tag immobilized on CM5 Chip can bind Mouse GAS6, His Tag with an affinity constant of 15.62 nM as determined in SPR assay (Biacore T200).

## Mouse GAS6 Protein

Cat. No. GAS-MM106



### Assay Data



Mouse TYRO3, His Tag immobilized on CM5 Chip can bind Mouse GAS6, His Tag with an affinity constant of 11.31  $\mu\text{M}$  as determined in SPR assay (Biacore T200).