

# Human GARP (Y137H) & Latent TGF Beta 1 Complex Protein

Cat. No. GAT-HM102

## Description

<b>Source</b>	Recombinant Human GARP(Y137H)&Latent TGF Beta 1 Complex Protein is expressed from HEK293 with His tag and Avi tag at the C-Terminus. It contains His20-Leu628 (GARP(Y137H)) and Leu30-Ser390 (Latent TGF Beta 1).
<b>Accession</b>	Q14392(GARP(Y137H))&P01137(Latent TGF beta 1)
<b>Molecular Weight</b>	The protein has a predicted MW of 70.3 kDa (GARP(Y137H)) and 41.4 kDa (Latent TGF Beta 1). Due to glycosylation, the protein migrates to 71-75 kDa (GARP(Y137H)), 13 kDa and 42-45 kDa (Latent TGF Beta 1) based on Bis-Tris PAGE result.
<b>Endotoxin</b>	Less than 0.1 EU per µg by the LAL method.
<b>Purity</b>	> 95% as determined by Bis-Tris PAGE > 95% as determined by HPLC

## Formulation and Storage

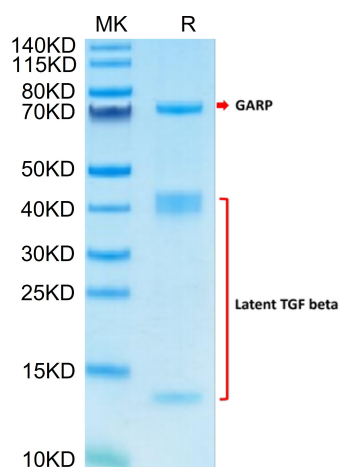
<b>Formulation</b>	Supplied as 0.22µm filtered solution in PBS (pH 7.4).
<b>Storage</b>	Valid for 12 months from date of receipt when stored at -80°C. Recommend to aliquot the protein into smaller quantities for optimal storage. Please minimize freeze-thaw cycles.

## Background

GARP&Latent TGF Beta is a complex found on surface of many types of cells. In Tregs, GARP is involved in TCR-mediated activation of Latent TGF-β and thus promoting secretion and activation of TGF-β. Integrin αvβ8 on the surface of immune cells and other cells recognizes RGD in LAP, resulting in the release of mature TGF-β from the TGF-β&GARP complex.

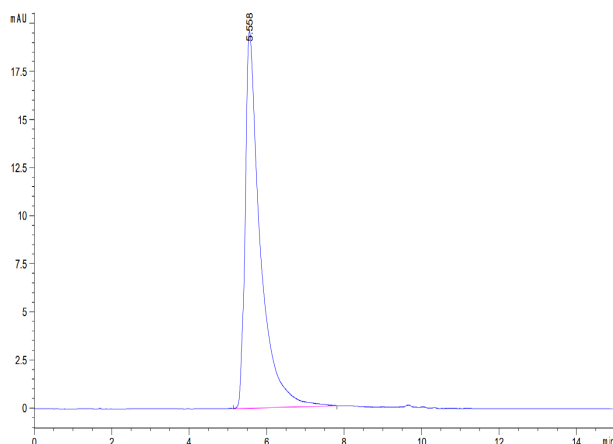
## Assay Data

### Bis-Tris PAGE



Human GARP (Y137H) & Latent TGF Beta 1 Complex on Bis-Tris PAGE under reduced condition. The purity is greater than 95%.

### SEC-HPLC



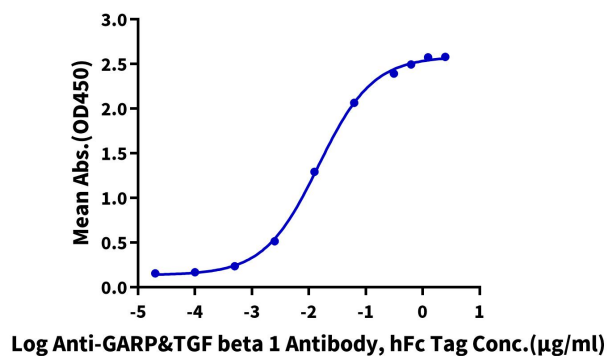
The purity of Human GARP (Y137H) & Latent TGF Beta 1 Complex is greater than 95% as determined by SEC-HPLC.

Assay Data

ELISA Data

**Human GARP (Y137H) & Latent TGF Beta 1, His Tag ELISA**

0.5µg Human GARP (Y137H) & Latent TGF Beta 1, His Tag Per Well



Immobilized Human GARP (Y137H) & Latent TGF Beta 1 Complex, His Tag at 5µg/ml (100µl/well) on the plate. Dose response curve for Anti-GARP&Latent TGF Beta 1 Antibody, hFc Tag with the EC50 of 14.8ng/ml determined by ELISA.