

# Canine GUCY2C/Guanylyl cyclase C Protein

Cat. No. GCC-DM101



## Description

|                         |   |
|-------------------------|---|
| <b>Source</b>           | Recombinant Canine GUCY2C/Guanylyl cyclase C Protein is expressed from Expi293 with His tag at the C-terminal.<br>It contains Tyr21-Gln430. |
| <b>Accession</b>        | F1PAG3  |
| <b>Molecular Weight</b> | The protein has a predicted MW of 47.6 kDa. Due to glycosylation, the protein migrates to 75-80 kDa based on Tris-Bis PAGE result.          |
| <b>Endotoxin</b>        | Less than 1EU per ug by the LAL method.   |
| <b>Purity</b>           | > 95% as determined by Tris-Bis PAGE<br>> 95% as determined by HPLC   |

## Formulation and Storage

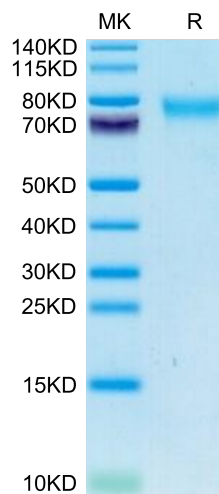
|                    |   |
|--------------------|---|
| <b>Formulation</b> | Supplied as 0.22µm filtered solution in PBS (pH 7.4). Please dilute to the desired concentration according to the concentration of the solution shown on the product label.             |
| <b>Storage</b>     | Valid for 12 months from date of receipt when stored at -80°C. Recommend to aliquot the protein into smaller quantities for optimal storage. Please do not repeated freeze-thaw cycles. |

## Background

Guanylyl cyclase C (GUCY2C) has canonical centrality in defense of key intestinal homeostatic mechanisms, encompassing fluid and electrolyte balance, epithelial dynamics, antitumorigenesis, and intestinal barrier function. GUCY2C may represent a new target for anti-obesity pharmacotherapy.

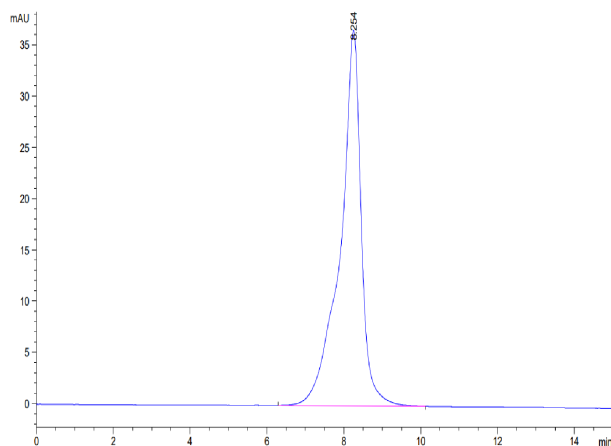
## Assay Data

### Tris-Bis PAGE



Canine GUCY2C/Guanylyl cyclase C on Tris-Bis PAGE under reduced condition. The purity is greater than 95%.

### SEC-HPLC



The purity of Canine GUCY2C/Guanylyl cyclase C is greater than 95% as determined by SEC-HPLC.