

Canine GUCY2C/Guanylyl cyclase C Protein

Cat. No. GCC-DM101

Description

Source	Recombinant Canine GUCY2C/Guanylyl cyclase C Protein is expressed from HEK293 with His tag at the C-Terminus. It contains Tyr21-Gln430.
Accession	F1PAG3
Molecular Weight	The protein has a predicted MW of 47.6 kDa. Due to glycosylation, the protein migrates to 75-80 kDa based on Tris-Bis PAGE result.
Endotoxin	Less than 1EU per ug by the LAL method.
Purity	> 95% as determined by Tris-Bis PAGE > 95% as determined by HPLC

Formulation and Storage

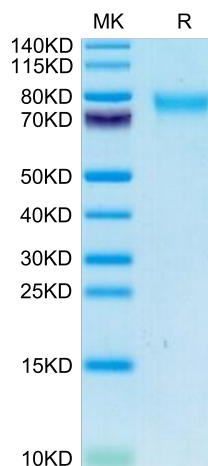
Formulation	Lyophilized from 0.22µm filtered solution in PBS (pH 7.4). Normally 8% trehalose is added as protectant before lyophilization.
Reconstitution	Centrifuge the tube before opening. Reconstituting to a concentration more than 100 µg/ml is recommended. Dissolve the lyophilized protein in distilled water.
Storage	-20 to -80°C for 12 months as supplied from date of receipt. -20 to -80°C for 3-6 months in unopened state after reconstitution. 2-8°C for 2-7 days after reconstitution. Recommend to aliquot the protein into smaller quantities for optimal storage. Please minimize freeze-thaw cycles.

Background

Guanylyl cyclase C (GUCY2C) has canonical centrality in defense of key intestinal homeostatic mechanisms, encompassing fluid and electrolyte balance, epithelial dynamics, antitumorigenesis, and intestinal barrier function. GUCY2C may represent a new target for anti-obesity pharmacotherapy.

Assay Data

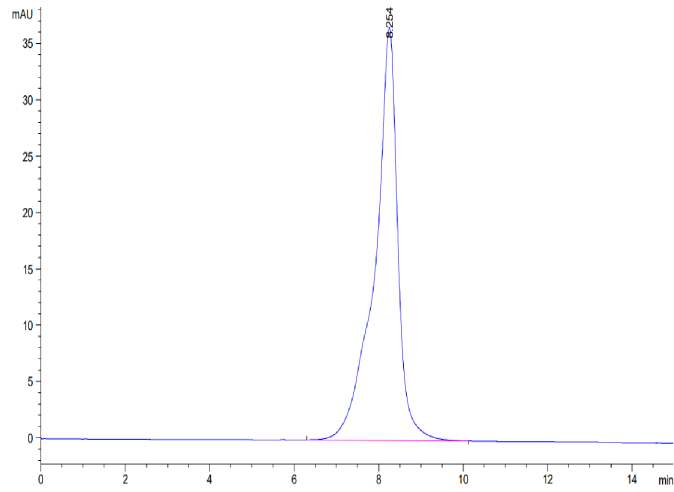
Tris-Bis PAGE



Canine GUCY2C/Guanylyl cyclase C on Tris-Bis PAGE under reduced condition. The purity is greater than 95%.

SEC-HPLC

Assay Data



The purity of Canine GUCY2C/Guanylyl cyclase C is greater than 95% as determined by SEC-HPLC.