

Cynomolgus Latent GDF-8 Protein

Cat. No. GDF-CM108



Description

| | |
|-------------------------|--|
| Source | Recombinant Cynomolgus Latent GDF-8 Protein is expressed from HEK293 with His tag at the N-terminus. |
| | It contains Gly19-Ser375. |
| Accession | Q95J86 |
| Molecular Weight | The protein has a predicted MW of 41.64 kDa. Due to glycosylation, the protein migrates to 13-15 kDa, 38-41 kDa and 48-52 kDa based on Bis-Tris PAGE result. |
| Endotoxin | Less than 0.1 EU per µg by the LAL method. |
| Purity | > 95% as determined by Bis-Tris PAGE |
| | > 95% as determined by HPLC |

Formulation and Storage

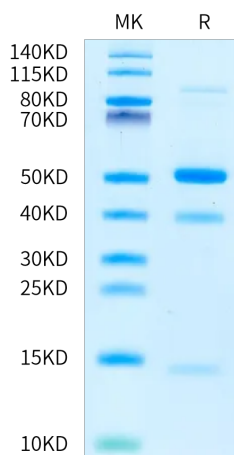
| | |
|-----------------------|---|
| Formulation | Lyophilized from 0.22 µm filtered solution in PBS (pH 7.4). Normally 8% trehalose is added as protectant before lyophilization. |
| Reconstitution | Dissolve the lyophilized protein in distilled water. Please refer to the Certificate of Analysis for detailed instructions. |
| Storage | -20 to -80°C for 12 months as supplied from date of receipt. -80°C for 3 months after reconstitution. Recommend to aliquot the protein into smaller quantities for optimal storage. Please minimize freeze-thaw cycles. |

Background

Growth/differentiation factor 8 (GDF8), or myostatin, negatively regulates muscle mass. GDF8 is held in a latent state through interactions with its N-terminal prodomain. GDF8, like numerous TGF-β family members, is a disulfidelinked dimer that is synthesized as a precursor protein which requires cleavage by a furin-like protease to yield an N-terminal prodomain and a C-terminal mature, signaling domain.

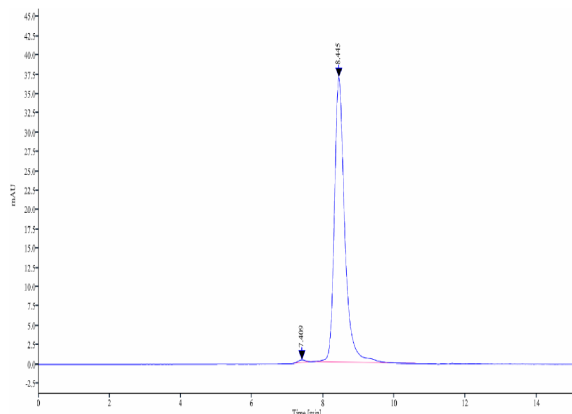
Assay Data

Bis-Tris PAGE



Cynomolgus Latent GDF-8 on Bis-Tris PAGE under reduced condition. The purity is greater than 95%.

SEC-HPLC



The purity of Cynomolgus Latent GDF-8 is greater than 95% as determined by SEC-HPLC.

Cynomolgus Latent GDF-8 Protein

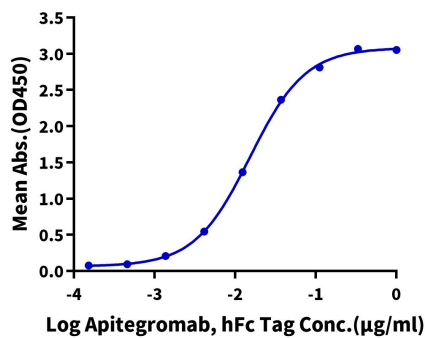
Cat. No. GDF-CM108



Assay Data

ELISA Data

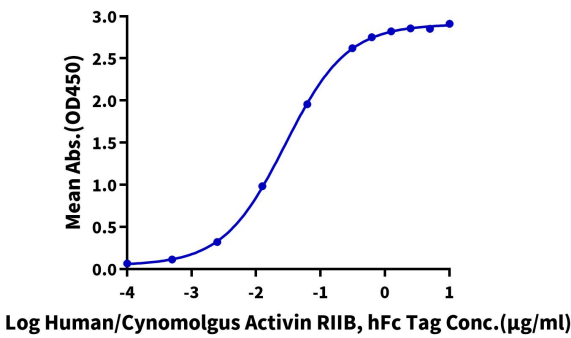
Cynomolgus Latent GDF-8, His Tag ELISA
0.5µg Cynomolgus Latent GDF-8, His Tag Per Well



Immobilized Cynomolgus Latent GDF-8, His Tag at 5µg/ml (100µl/well) on the plate. Dose response curve for Apitegromab, hFc Tag with the EC50 of 15.3ng/ml determined by ELISA.

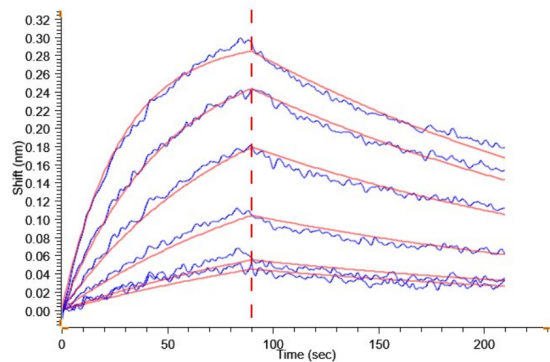
ELISA Data

Cynomolgus Latent GDF-8, His Tag ELISA
0.1µg Cynomolgus Latent GDF-8, His Tag Per Well



Immobilized Cynomolgus Latent GDF-8, His Tag at 1µg/ml (100µl/well) on the plate. Dose response curve for Human/Cynomolgus Activin RIIB, hFc Tag with the EC50 of 28.2ng/ml determined by ELISA.

BLI Data



Loaded Apitegromab, hFc Tag on ProA-Biosensor can bind Cynomolgus Latent GDF-8 , His Tag with an affinity constant of 23.00 nM as determined in BLI assay (Gator® Prime).