

Cynomolgus Latent GDF-8 Protein, Ultra Low Endotoxin

Cat. No. GDF-CM128-UL

Description

Source	Recombinant Cynomolgus Latent GDF-8 Protein is expressed from HEK293 with His tag at the N-terminus. It contains Gly19-Ser375.
Accession	Q95J86
Molecular Weight	The protein has a predicted MW of 41.64 kDa. Due to glycosylation, the protein migrates to 14 kDa and 32-38 kDa based on Bis-Tris PAGE result.
Endotoxin	Less than 0.01 EU per µg by the LAL method.
Purity	> 95% as determined by Bis-Tris PAGE > 90% as determined by HPLC

Formulation and Storage

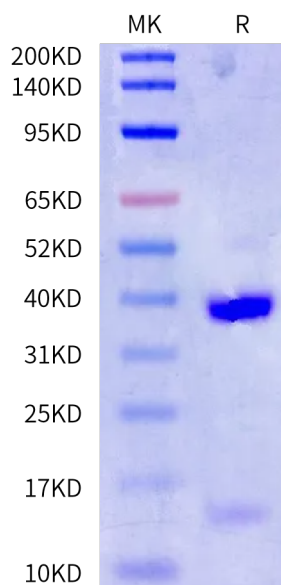
Formulation	Lyophilized from 0.22 µm filtered solution in PBS (pH 7.4). Normally 8% trehalose is added as protectant before lyophilization.
Reconstitution	Dissolve the lyophilized protein in distilled water. Please refer to the Certificate of Analysis for detailed instructions.
Storage	-20 to -80°C for 12 months as supplied from date of receipt. -80°C for 3 months after reconstitution. Recommend to aliquot the protein into smaller quantities for optimal storage. Please minimize freeze-thaw cycles.

Background

Growth/differentiation factor 8 (GDF8), or myostatin, negatively regulates muscle mass. GDF8 is held in a latent state through interactions with its N-terminal prodomain. GDF8, like numerous TGF-β family members, is a disulfidelinked dimer that is synthesized as a precursor protein which requires cleavage by a furin-like protease to yield an N-terminal prodomain and a C-terminal mature, signaling domain.

Assay Data

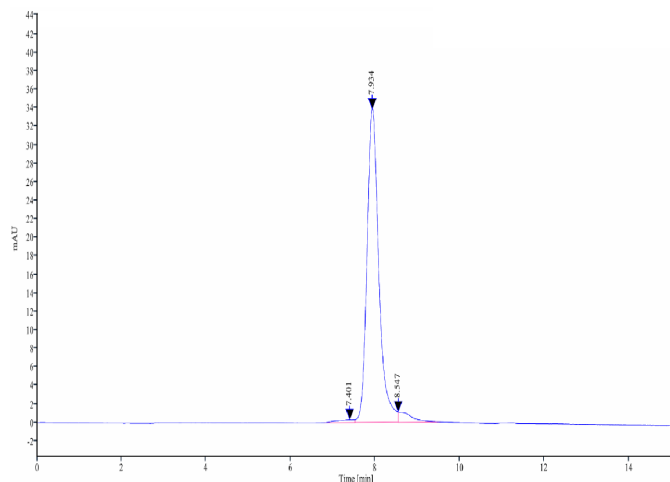
Bis-Tris PAGE



Cynomolgus Latent GDF-8 on Bis-Tris PAGE under reduced condition. The purity is greater than 95%.

SEC-HPLC

Assay Data

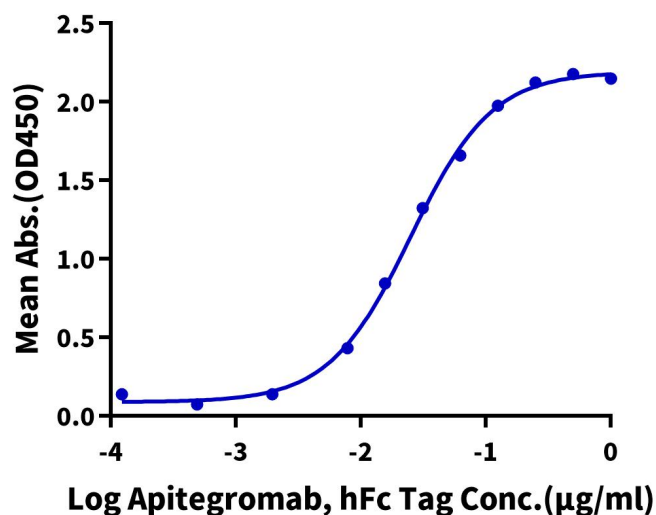


The purity of Cynomolgus Latent GDF-8 is greater than 90% as determined by SEC-HPLC.

ELISA Data

Cynomolgus Latent GDF-8, His Tag ELISA

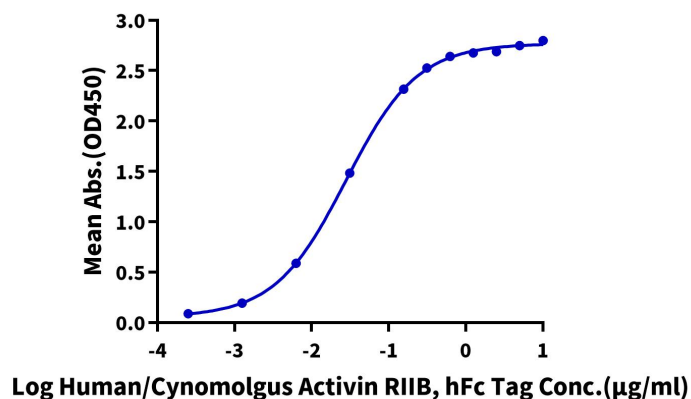
0.1µg Cynomolgus Latent GDF-8, His Tag Per Well



Immobilized Cynomolgus Latent GDF-8, His Tag at 1µg/ml (100µl/well) on the plate. Dose response curve for Apitegromab, hFc Tag with the EC50 of 25.0ng/ml determined by ELISA.

Cynomolgus Latent GDF-8, His Tag ELISA

0.1µg Cynomolgus Latent GDF-8, His Tag Per Well



Immobilized Cynomolgus Latent GDF-8, His Tag at 1µg/ml (100µl/well) on the plate. Dose response curve for Human/Cynomolgus Activin RIIb, hFc Tag with the EC50 of 27.9ng/ml determined by ELISA.