

Human GDNF Protein

Cat. No. GDF-HE001

Description

Source	Recombinant Human GDNF Protein is expressed from E.coli without tag It contains Ser78-Ile211.
Accession	P39905-1
Molecular Weight	The protein has a predicted MW of 15.06 kDa same as Tris-Bis PAGE result.
Endotoxin	Less than 1EU per µg by the LAL method.
Purity	> 95% as determined by Tris-Bis PAGE > 95% as determined by HPLC

Formulation and Storage

Formulation	Supplied as 0.22µm filtered solution in PBS (pH 7.4). Please dilute to the desired concentration according to the concentration of the solution shown on the product label.
Storage	Valid for 12 months from date of receipt when stored at -80°C. Recommend to aliquot the protein into smaller quantities for optimal storage. Please do not repeated freeze-thaw cycles.

Background

Glial cell line-derived neurotrophic factor (GDNF) is a 134 amino acid protein belonging in the GDNF family ligands (GFLs). GDNF was originally isolated from rat glial cell lines and identified as a neurotrophic factor with the ability to promote dopamine uptake within midbrain dopaminergic neurons.

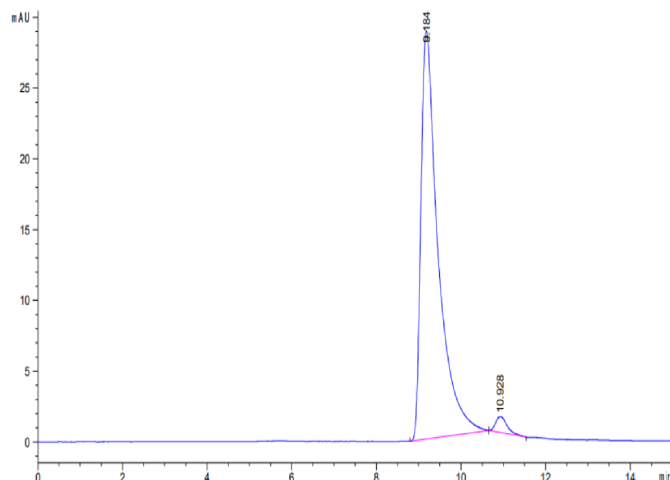
Assay Data

Tris-Bis PAGE



Human GDNF on Tris-Bis PAGE under reduced condition. The purity is greater than 95%.

SEC-HPLC

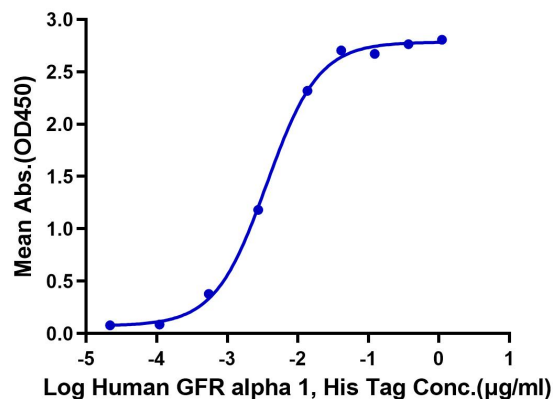


The purity of Human GDNF is greater than 95% as determined by SEC-HPLC.

ELISA Data

Assay Data

Human GDNF, No Tag ELISA
0.1µg Human GDNF, No Tag Per Well



Immobilized Human GDNF, No Tag at 1µg/ml (100µl/well) on the plate. Dose response curve for Human GFR alpha 1, His Tag with the EC50 of 3.7ng/ml determined by ELISA.