

Human/Mouse/Rat GDF-8 Protein

Cat. No. GDF-HM008

Description

Source	Recombinant Human/Mouse/Rat GDF-8 Protein is expressed from HEK293 without tag It contains Asp267-Ser375.
Accession	O14793
Molecular Weight	The protein has a predicted MW of 12.40 kDa. Due to glycosylation, the protein migrates to 13-15 kDa based on Tris-Bis PAGE result.
Endotoxin	Less than 1 EU per μg by the LAL method.
Purity	> 95% as determined by Tris-Bis PAGE

Formulation and Storage

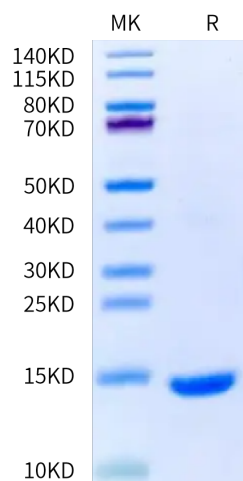
Formulation	Supplied as 0.22 μm filtered solution in 4 mM HCl.
Storage	Valid for 12 months from date of receipt when stored at -80°C . Recommend to aliquot the protein into smaller quantities for optimal storage. Please minimize freeze-thaw cycles.

Background

Growth/differentiation factor 8 (GDF8), or myostatin, negatively regulates muscle mass. GDF8 is held in a latent state through interactions with its N-terminal prodomain. GDF8, like numerous TGF- β family members, is a disulfidelinked dimer that is synthesized as a precursor protein which requires cleavage by a furin-like protease to yield an N-terminal prodomain and a C-terminal mature, signaling domain.

Assay Data

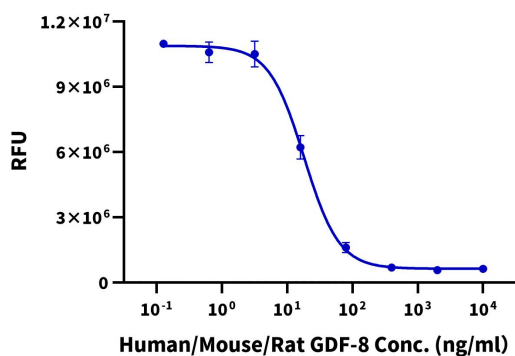
Tris-Bis PAGE



Human/Mouse/Rat GDF-8 on Tris-Bis PAGE under reduced (R) condition. The purity is greater than 95%.

Cell Based Assay

Human/Mouse/Rat GDF-8 Bioactivity



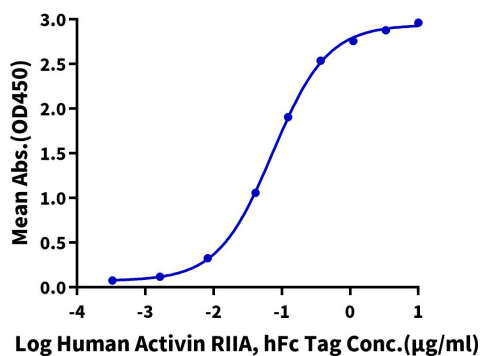
Determined by its ability to inhibit the proliferation of MPC-11 cells. The expected ED50 for this effect is < 30 ng/ml (QC Test).

Assay Data

ELISA Data

Human/Mouse/Rat GDF-8, No Tag ELISA

0.5µg Human/Mouse/Rat GDF-8, No Tag Per Well

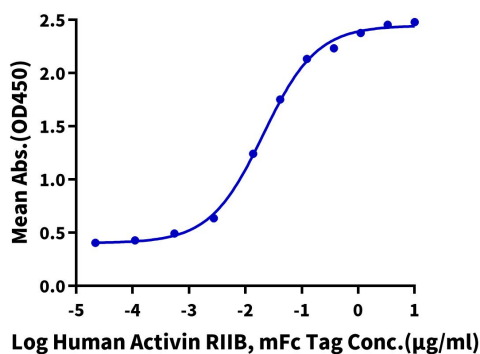


Immobilized Human/Mouse/Rat GDF-8, No Tag at 5 µg/ml (100 µl/well) on the plate. Dose response curve for Human Activin RIIA, hFc Tag with the EC50 of 73.4 ng/ml determined by ELISA.

ELISA Data

Human/Mouse/Rat GDF-8, No Tag ELISA

0.1µg Human/Mouse/Rat GDF-8, No Tag Per Well



Immobilized Human/Mouse/Rat GDF-8, No Tag at 1 µg/ml (100 µl/well) on the plate. Dose response curve for Human Activin RII B, mFc Tag with the EC50 of 20.8 ng/ml determined by ELISA.