

Biotinylated Human/Cynomolgus/Mouse/Rat GDF-8 Protein

Cat. No. GDF-HM008B

Description

Source	Recombinant Biotinylated Human/Cynomolgus/Mouse/Rat GDF-8 Protein is expressed from HEK293 with Avi tag at the C-terminus. It contains Asp267-Ser375 (Human/Cynomolgus) / Asp268-Ser376 (Mouse/Rat).
Accession	O14793(Human) /Q95J86(Cynomolgus) /O08689(Mouse) /O35312(Rat)
Molecular Weight	The protein has a predicted MW of 14.21 kDa. Due to glycosylation, the protein migrates to 15-18 kDa based on Bis-Tris PAGE result.
Endotoxin	Less than 1 EU per µg by the LAL method.
Purity	> 95% as determined by Bis-Tris PAGE

Formulation and Storage

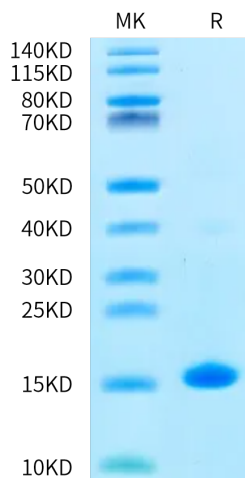
Formulation	Lyophilized from 0.22 µm filtered solution in 4mM HCL. Normally 8% trehalose is added as protectant before lyophilization.
Reconstitution	Dissolve the lyophilized protein in 4mM HCL. Please refer to the Certificate of Analysis for detailed instructions.
Storage	-20 to -80°C for 12 months as supplied from date of receipt. -80°C for 3 months after reconstitution. Recommend to aliquot the protein into smaller quantities for optimal storage. Please minimize freeze-thaw cycles.

Background

Growth/differentiation factor 8 (GDF8), or myostatin, negatively regulates muscle mass. GDF8 is held in a latent state through interactions with its N-terminal prodomain. GDF8, like numerous TGF-β family members, is a disulfidelinked dimer that is synthesized as a precursor protein which requires cleavage by a furin-like protease to yield an N-terminal prodomain and a C-terminal mature, signaling domain.

Assay Data

Bis-Tris PAGE

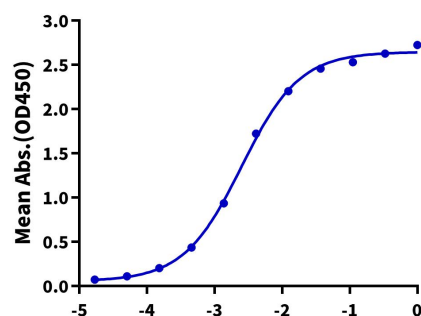


Biotinylated Human/Cynomolgus/Mouse/Rat GDF-8 on Bis-Tris PAGE under reduced condition. The purity is greater than 95%.

ELISA Data

Biotinylated Human/Mouse/Rat GDF-8, Avi Tag ELISA

0.1µg Human/Cynomolgus Activin RIIB, His Tag Per Well



Immobilized Human/Cynomolgus Activin RIIB, His Tag at 1µg/ml (100µl/well) on the plate. Dose response curve for Biotinylated Human/Cynomolgus/Mouse/Rat GDF-8, Avi Tag with the EC50 of 2.5ng/ml determined by ELISA.

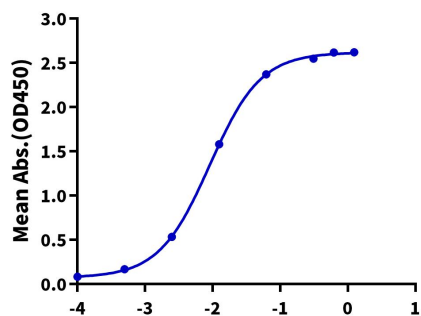
Log Biotinylated Human/Mouse/Rat GDF-8, Avi Tag Conc.(µg/ml)

Assay Data

ELISA Data

Biotinylated Human/Mouse/Rat GDF-8, Avi Tag ELISA

0.1µg Human/Cynomolgus Activin RIIA, His Tag Per Well



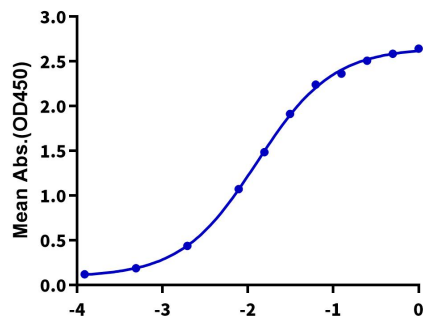
Immobilized Human/Cynomolgus Activin RIIA, His Tag at 1µg/ml(100µl/well) on the plate. Dose response curve for Biotinylated Human/Cynomolgus/Mouse/Rat GDF-8, Avi Tag with the EC50 of 9.1ng/ml determined by ELISA (QC Test).

Log Biotinylated Human/Mouse/Rat GDF-8, Avi Tag Conc.(µg/ml)

ELISA Data

Biotinylated Human/Mouse/Rat GDF-8, Avi Tag ELISA

0.05µg Biotinylated Human/Mouse/Rat GDF-8, Avi Tag Per Well



Immobilized Biotinylated Human/Cynomolgus/Mouse/Rat GDF-8, Avi Tag at 0.5µg/ml (100µl/Well) on streptavidin (5µg/ml) precoated plate. Dose response curve for Anti-GDF8 Antibody, hFc Tag with the EC50 of 12.8ng/ml determined by ELISA.

Log Anti-GDF8 Antibody, hFc Tag Conc.(µg/ml)