

Human Latent GDF-11 Protein (pro&latent)

Cat. No. GDF-HM111

Description

Source	Recombinant Human Latent GDF-11 Protein is expressed from HEK293 with His tag at the C-terminus. It contains Ala25-Ser407.
Accession	O95390
Molecular Weight	The protein has a predicted MW of 44.14 kDa. Due to glycosylation, the protein migrates to 15-20 kDa, 40-45 kDa and 50-60 kDa based on Bis-Tris PAGE result.
Endotoxin	Less than 1 EU per µg by the LAL method.
Purity	> 95% as determined by Bis-Tris PAGE

Formulation and Storage

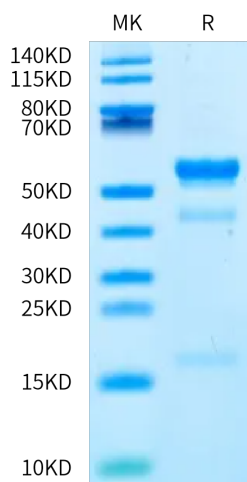
Formulation	Lyophilized from 0.22 µm filtered solution in PBS, 200mM L-arginine (pH 7.4). Normally 8% trehalose is added as protectant before lyophilization.
Reconstitution	Dissolve the lyophilized protein in distilled water. Please refer to the Certificate of Analysis for detailed instructions.
Storage	-20 to -80°C for 12 months as supplied from date of receipt. -80°C for 3 months after reconstitution. Recommend to aliquot the protein into smaller quantities for optimal storage. Please minimize freeze-thaw cycles.

Background

Growth differentiation factor-11 (GDF-11), also known as bone morphogenetic protein-11, belongs to the transforming growth factor-beta superfamily. GDF-11 is highly related to MSTN, plays multiple roles during embryonic development, including regulating development of the axial skeleton, kidneys, nervous system, and pancreas.

Assay Data

Bis-Tris PAGE

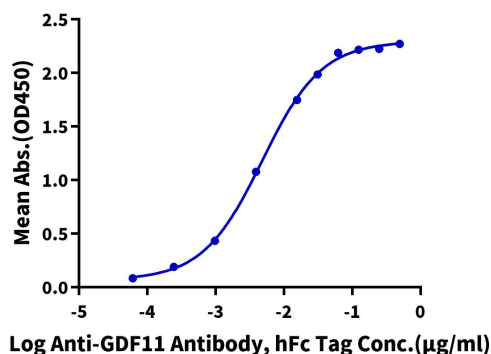


Human Latent GDF-11 on Bis-Tris PAGE under reduced condition. The purity is greater than 95%.

ELISA Data

Human Latent GDF-11, His Tag ELISA

0.1µg Human Latent GDF-11, His Tag Per Well



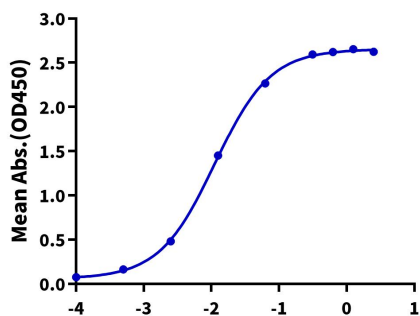
Immobilized Human Latent GDF-11, His Tag at 1µg/ml (100µl/well) on the plate. Dose response curve for Anti-GDF11 Antibody, hFc Tag with the EC50 of 4.8ng/ml determined by ELISA.

Assay Data

ELISA Data

Human Latent GDF-11, His Tag ELISA

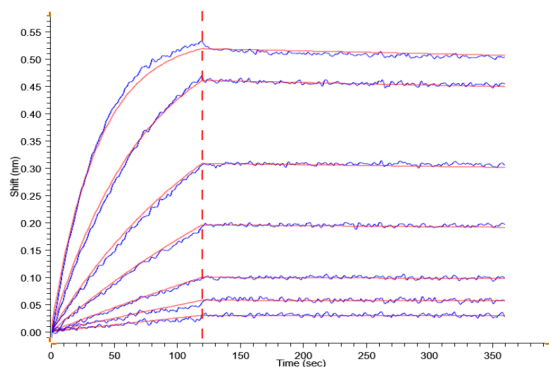
0.2µg Human Latent GDF-11, His Tag Per Well



Immobilized Human Latent GDF-11, His Tag at 2µg/ml(100µl/well) on the plate. Dose response curve for Human/Cynomolgus Activin RIIB, hFc Tag with the EC50 of 11.2ng/ml determined by ELISA.

Log Human/Cynomolgus Activin RIIB, hFc Tag Conc.(µg/ml)

BLI Data



Loaded Anti-GDF-11 Antibody, hFc Tag on ProA-Biosensor can bind Human Latent GDF-11, His Tag with an affinity constant of 0.15 nM as determined in BLI assay.